

# PIPELAYERS SP/CPX-594

CE Approved (with optional features)

## SP-594 Conversion Package

The SP-594 is a conversion of a Caterpillar D9H tractor into a fully hydraulic-controlled sideboom. This includes the CPX hydraulic kit, counterweight assembly, upper and lower hardbar, A-frame, boom and blocks.

## 594 CPX Hydraulic Kit

The CPX package is a rapid conversion of your Caterpillar mechanical 594 sideboom into a fully hydraulic-controlled sideboom.

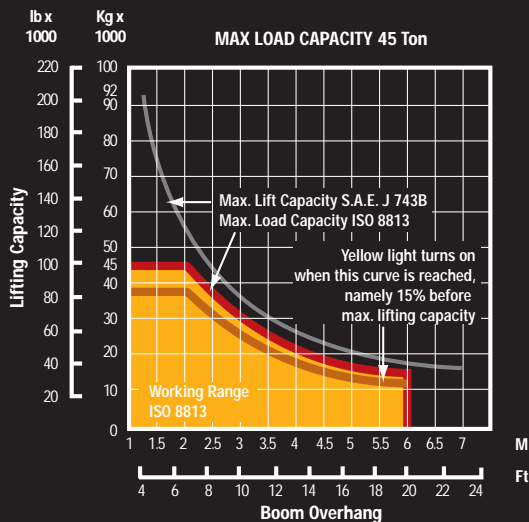


## COMPARISONS

**MAXIMUM LIFT CAPACITY** 90,000 kg / 200,000 lb

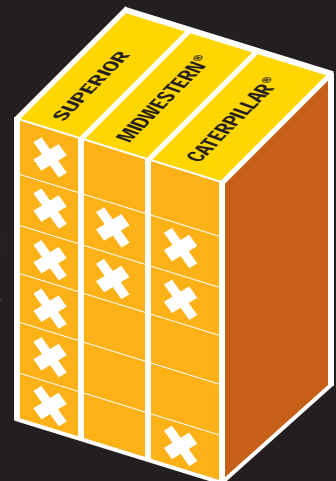
MODEL	SUPERIOR SP-594		SUPERIOR CPX-594		CAT® 594H	
<b>Tractor</b>						
Flywheel Power	305 kW	410 hp	305 kW	410 hp	305 kW	410 hp
Track Gauge	2.54 m	100 in	2.54 m	100 in	2.54 m	100 in
Width of Std. Shoe	812 mm	32 in	860 mm	34 in	860 mm	34 in
<b>Sideboom</b>						
Std. Boom Length	7.31 m	24 ft	7.31 m	24 ft	7.31 m	24 ft
SUPERIOR Optional Boom	8.5 m	28 ft	8.5 m	28 ft	8.5 m	28 ft
Hyd. Tank Capacity	120 liters	32 gal	120 liters	32 gal	N/A	N/A
Wire Rope Diameter	19 mm	3/4 in	19 mm	3/4 in	N/A	N/A
Load Line Parts	8	8	8	8	8	8
Boom Line Parts	5	5	5	5	5	5
Working Weight	55,100 kg	121,500 lb	55,100 kg	121,500 lb	55,100 kg	121,500 lb
<b>General Dimensions</b>						
Shipping Length	5.5 m	18'3"	5.79 m	19'0"	5.79 m	19'0"
Shipping Width	4.1 m	13'4"	3.76 m	12'4"	3.76 m	12'4"
Shipping Height	3.1 m	10'2"	3.07 m	10'1"	3.07 m	10'1"

## LIFTING CAPACITY (24'/7.32 m Boom)



## FEATURES COMPARISON

- Single lever control
- Free-fall system
- Vertical boom kickout
- Anti-two block
- Anti-tipping system
- Meets CE approval



SP-594 with (18) leaves to reduce -4%. SP-594 with (19) leaves will be the same as Std. 594H.

# PIPELAYERS SP/CPX-594

## SPECIFICATIONS



### CAPACITIES

Hydraulic System Tank	120 liters / 32 U.S. gallons
-----------------------	------------------------------



### HYDRAULIC SYSTEM

Pump	Variable displacement, load sensing
Maximum flow	286 liters / minute
Control blocks	LUDV type, three balanced spools
Maximum working pressure	320 bar / 4640 p.s.i.
Load lowering valves	1-1/4 inch flangeable, pilot assisted



### HYDRAULIC WINCHES

Type	Hydraulically controlled drums (reversible) Driven by variable flow hydraulic pump and control valve block in open circuit
Final drive	Compact hydrostatic drive unit, three-stage planetary gear
Brakes	Integrated multiple-disk brake, spring applied hydraulic released

	HOOK	BOOM
Drum diameter	390 mm / 15.3 in	390 mm / 15.3 in
Flange diameter	590 mm / 23.2 in	530 mm / 20.8 in
Drum length	360 mm / 14.1 in	360 mm / 14.1 in
Capacity (19 mm / 3/4 in)	136 m / 446 ft	105 m / 344 ft
Wire rope installed	95 m / 311 ft	65 m / 213 ft
Hook speed	0-16 m/min / 0-52 ft / min	



### BOOM

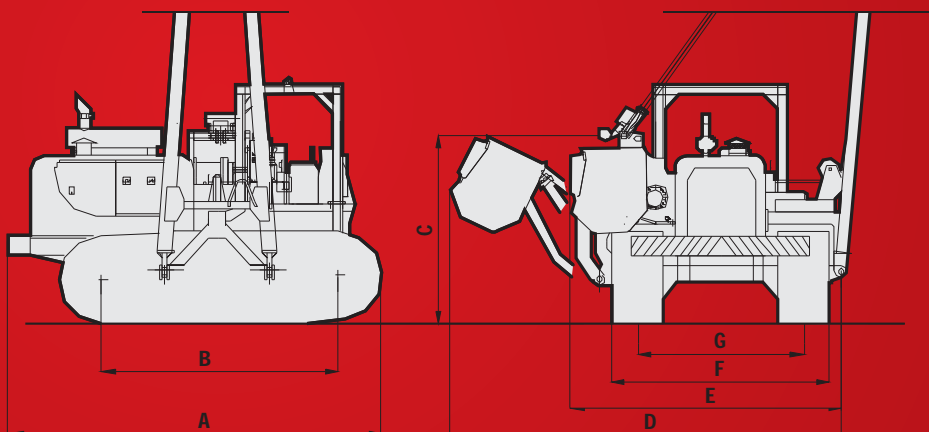
Type	7.31 m / 24 ft welded box square section
Diameter wire rope	19 mm / 3/4 in
Minimum breaking strength rope	323 kN / 72,530 lb
Part load line	8
Part boom line	5



### ADJUSTABLE COUNTERWEIGHTS

Removable counterweight leaves	17 leaves 600 kg / 1,330 lb each
Total weight extendable	12,560 kg / 27,680 lb

## DIMENSIONS



A	5.5 m / 18'
B	3.4 m / 11'
C	3.1 m / 10.2'
D	5.8 m / 18.3'
E	4.1 m / 13.4'
F	3.1 m / 10.1'
G	2.3 m / 7.5'



## CONTACT INFORMATION

### **Main office – General inquiries SUPERIOR Manufacturing**

16031 East Freeway  
Channelview, TX 77530  
U.S.A.  
Phone 281.457.4400  
Fax 281.452.5455  
U.S. Toll Free 800.383.2666  
Intl. Toll Free 800.9675.3948  
pipeline@wwmach.com  
www.worldwidemachinery.com

### **Italy office SUPERIOR Manufacturing**

Via Roma, 18  
San Pancrazio, Parma  
Italy

**Evan Greenberg**  
Vice-President of Intl. Operations

### **Worldwide offices Europe and Australia**

Juergen Hafemann  
Phone +49.0.231.963.3073 Germany  
Phone +61.0.400.144.432 Australia  
pipelinece@wwmach.com

### **India**

Abhishek Bhotika  
Phone +91.11.414.59230  
pipelineind@wwmach.com

### **Africa**

Evan Greenberg  
Phone +1.281.452.5800  
pipeline@wwmach.com

### **Russia, China and the Middle East**

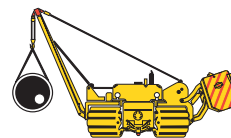
Sergio Braoude  
Phone +39.349.198.1281 Italy  
Phone +7.495.507.4827 Russia  
fsupipeline@wwmach.com

### **Latin America**

Salvador Villasana  
Phone +52.81.8.394.0160  
pipelinesa@wwmach.com

### **North America**

Rick Layh  
Phone +1.281.457.4400  
pipelinena@wwmach.com



**WORLDWIDE  
MACHINERY  
PIPELINE DIVISION**

 **SUPERIOR  
MANUFACTURING**

# DISCLAIMER

## DISCLAIMER

The information contained in this brochure is intended to be of a general nature only. The SUPERIOR Manufacturing Company may at any time and from time to time, for technical or other necessary reasons, modify any of the details or specifications of the product described in this brochure. Illustrations do not necessarily show products in standard conditions. The dimensions, weights and capacities shown herein, as well as any conversion data used, are approximate only and are subject to variations within normal manufacturing techniques.