



SPD-250 Padding Machine

| | |
|------------------|--------------------------------|
| Screening area | 30 sq ft / 2.78 m ² |
| Operating weight | 60,000 lbs / 27,215 kg |
| Engine type | Caterpillar C-7 ACERT |
| Horsepower | 184 kW / 250 HP |



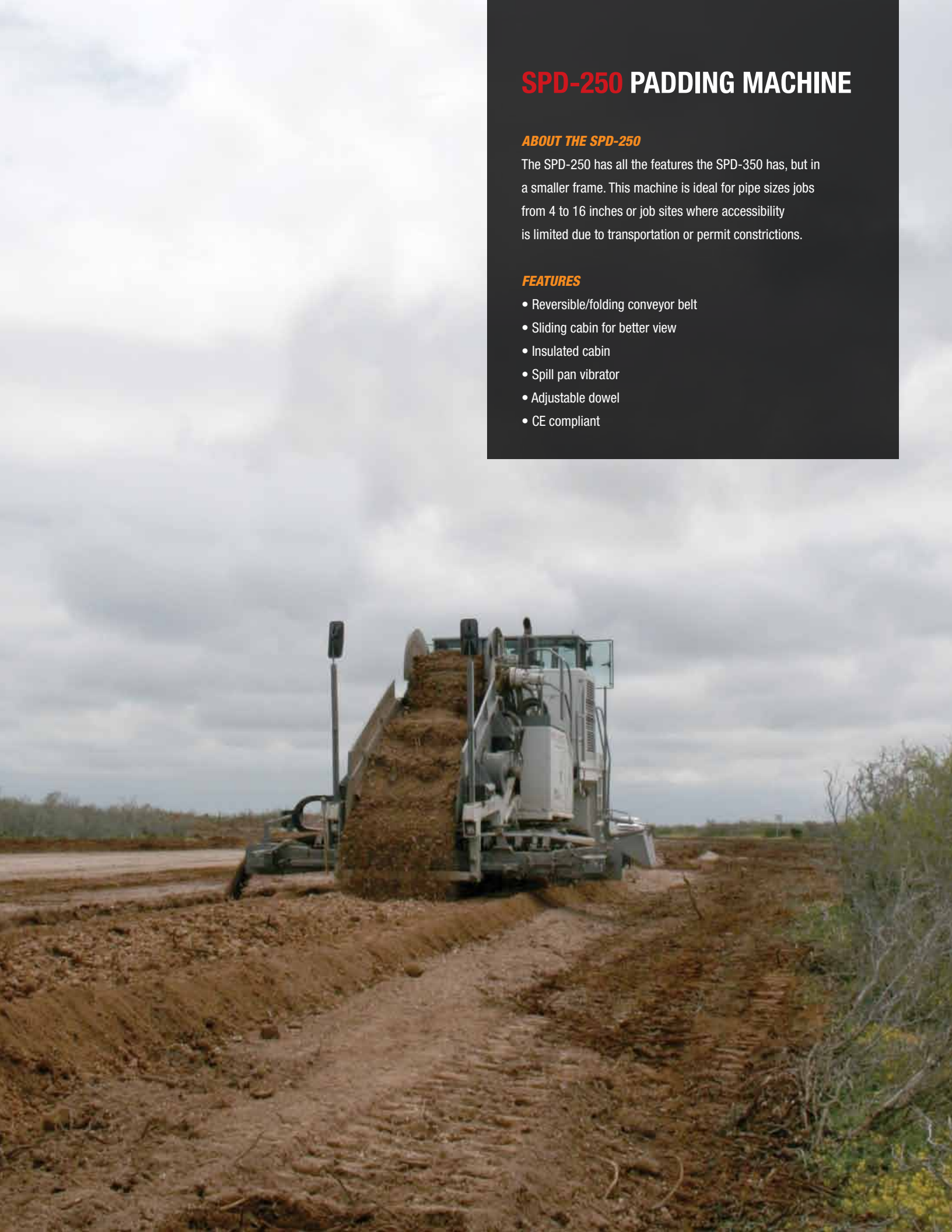
SPD-250 PADDING MACHINE

ABOUT THE SPD-250

The SPD-250 has all the features the SPD-350 has, but in a smaller frame. This machine is ideal for pipe sizes jobs from 4 to 16 inches or job sites where accessibility is limited due to transportation or permit constrictions.

FEATURES

- Reversible/folding conveyor belt
- Sliding cabin for better view
- Insulated cabin
- Spill pan vibrator
- Adjustable dowel
- CE compliant



GENERAL SPECIFICATIONS

ENGINE

| | |
|-------------------------------|--------------------|
| Type | CATERPILLAR |
| Model | C-7 ACERT |
| Net flywheel power (DIN 6270) | 250 HP - 184 kW |
| Governed speed | 2,100 g/pm |
| Displacement | 7.2 lt - 442 cu in |

HYDRAULIC SYSTEM

| | |
|----------------------------|--|
| Main pumps: | Bosch-Rexroth |
| | - 2 independent hydrostatic variable pumps travel |
| Maximum capacity | 2x177 lt/min - 2x47 U.S. gal/min |
| Maximum operating pressure | 420 bar - 6,090 p.s.i. |
| | - 1 hydrostatic variable pump escalator |
| Maximum capacity | 110 lt/min - 29 U.S. gal/min |
| Maximum operating pressure | 300 bar - 4,350 p.s.i. |
| | - 1 hydrostatic variable pump load sensing service |
| Maximum capacity | 95 lt/min - 25 U.S. gal/min |
| Maximum operating pressure | 250 bar - 3,625 p.s.i. |

TRANSMISSION

| | |
|---------------|---|
| Type | Hydrostatic |
| Motors | (HYDROMATIC) two motors with axial pistons disappearing into the track frames |
| Brakes | Integrated negative control |
| Final drives | Epicycloidal oil soaked |
| Maximum speed | |
| - 1 speed | 2.5 km/h - 1.6 miles/hr |
| - 2 speed | 4.5 km/h - 2.8 miles/hr |

TRACK FRAME

| | |
|---|-------------------------|
| Swinging track frame with sealed and lubricated chain | |
| Satl track chain pitch | 171.45 mm - 6.75 in |
| Lower track rollers | 9 per side |
| Upper track rollers | 2 per side |
| Length of track on the ground | 3,450 mm - 136 in |
| Standard shoes width | 550 mm - 22 in |
| Gauge | 2,000 mm - 79 in |
| Track shoes | 52 per side |
| Lower track roller area | 37,950 cm ² |
| Pressure on the ground | 0.77 kg/cm ² |

CONTROLS

| | |
|--------|--------------------|
| Type | Pilot operated |
| Safety | Emergency shut-off |

FLUID CAPACITIES

| | |
|--------------------------|---------------------------|
| Fuel tank | 365 liters - 96 U.S. gal |
| Hydraulic system circuit | 600 liters - 158 U.S. gal |

ESCALATOR

| | |
|--|--|
| Type | Hydrostatic, operator controlled, variable speed |
| Vertical adjustment | Minus 11 inches to plus 4 ft |
| Chain Adjusters | Hydraulic |
| Reversible double chain escalator with steel shoes | |
| Shoes width | 1,000 mm - 40 in |

FRONT CRACKING WHEEL

| | |
|-----------------|---------------------------|
| Number of wheel | 2 |
| Transmission | Hydraulic |
| Hydraulic motor | 1 orbital type |
| Lifter | 1 hydraulic cylinder |
| Number of tools | 6 |
| Optional | Front roller ice crushing |

SCREEN

| | |
|-----------------------------|--------------------------------|
| Interchangeable screen mesh | 1/2" to 4" |
| Width | 1,206 mm - 47.5 in |
| Length | 2,337 mm - 92 in |
| Area | 30 sq ft - 2.78 m ² |
| Number of decks | 1 |
| Maximum capacity | 110 m ³ /hr |
| Maximum feed size | 500 mm - 20 in |
| Transmission | Hydrostatic |
| Hydraulic motor | 1 gear type |

CONVEYOR BELT

| | |
|-------------------------------------|--------------------------|
| Bilateral hydraulic extension slide | |
| Type | Rubber |
| Width | 600 mm - 24 in |
| Length | 3,900 mm - 12.8 ft |
| Variable speed | 0 - 420 mt/min |
| Rotation capability | Reversible |
| Transmission | Hydraulic variable speed |
| Hydraulic motors | 2 orbital type |

ELECTRIC SYSTEM

| | |
|-------------------------------------|--------|
| Operating voltage | 24 V |
| Maintenance free supplied batteries | 2 |
| Capacity (total) | 160 Ah |
| Starter capacity | 7.5 Kw |
| Alternator | 60 A |

PRODUCTION

| | |
|--|----------------------|
| Production rate will vary with certain conditions: | |
| Soil Condition, Pipe Size, Terrain, R.O.W. | |
| Indicative production, 24" pipe, normal soil | 158 mt/h - 520 ft/hr |

SPD-250 FEATURES



CONTROL PANEL
Controls are duplicated on both sides of the cabin for ease of operation on either side of the ditch.



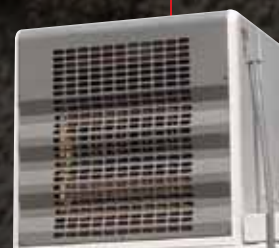
INSULATED CABIN
Insulated cabin with heater and A/C allows for total comfort, even in the harshest environments.



OSCILLATING CABIN
Hydraulically slides out to either side of the machine to facilitate working on either side of the ditch.



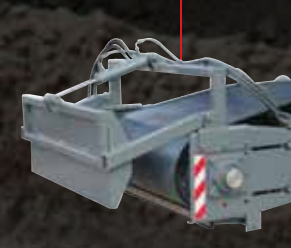
ADJUSTABLE ESCALATOR
It can be adjusted hydraulically to compensate for different terrain gradients.



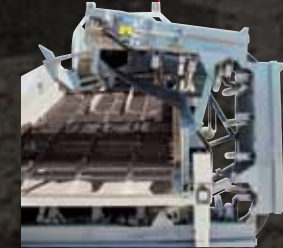
INSULATED ENGINE
Engine compartment reduces noise to comply with EU noise limit requirements.



CABIN GLASS PANELING
Open glass paneling throughout cabin provides operator with 360° unobstructed view.



ADJUSTABLE CONVEYOR DOWEL
Controlled hydraulically to adjust angle and distance at which the material is placed back into the ditch.



REVERSIBLE CONVEYOR
Conveyor can be used on either side of machine. It also can be folded into 3 parts for easy shipping w/o disassembly.

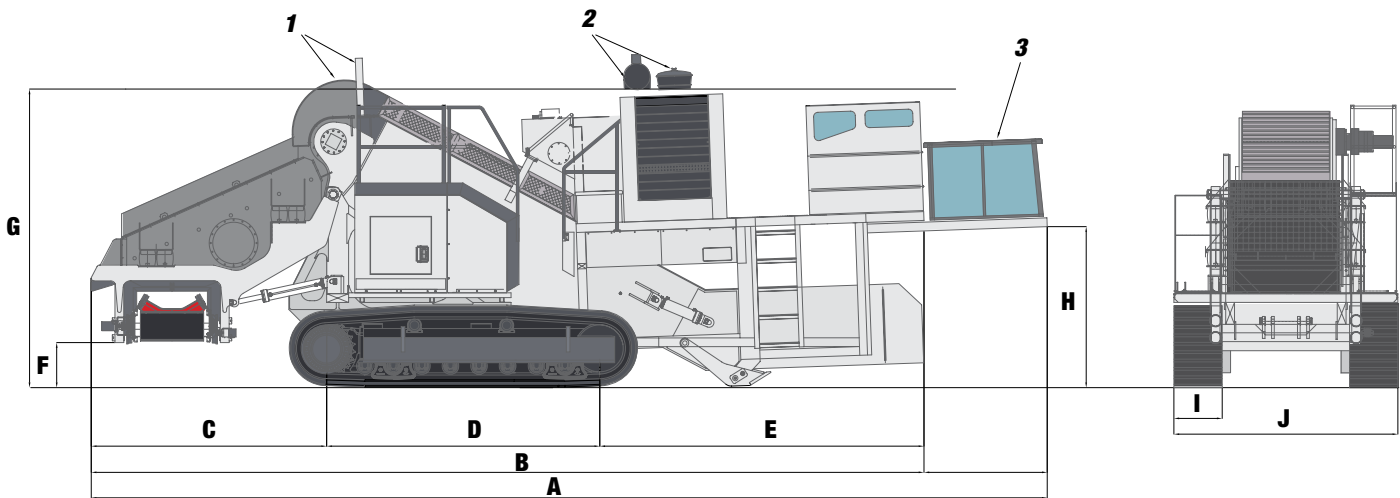


SPILL PAN VIBRATOR
Prevents material from sticking to pan, especially when soil conditions are wet.



DIMENSIONS

Operating weight 60,000 lb / 27,215 kg



| | Feet | Meters |
|---|---------|---------|
| A Overall length (with canopy disassembled for shipping) | 35.9 ft | 10.9 m |
| B Length | 31.2 ft | 9.5 m |
| C Length of screen section | 8.95 ft | 2.68 m |
| D Length of tracks on the ground | 10.2 ft | 3.1 m |
| E Length of front section | 12.2 ft | 3.7 m |
| F Ground clearance to conveyor | 1.8 ft | 51.3 cm |
| G Height (with canopy, railings and muffler disassembled for shipping) | 11.2 ft | 3.4 m |
| H Front section clearance | 6 ft | 1.84 m |
| I Width of tracks | 1.96 ft | 55 cm |
| J Overall width | 8.4 ft | 2.55 m |

Shipping disassembly

- 1 Escalator railings are disassembled**
- 2 Muffler and air filter are disassembled and placed between engine and cab**
- 3 Cabin is mounted on front supports**

AVAILABLE MODELS



Padding Bucket | Screen Area: 1.53 m² / 16.47 sq ft



SPD-150 | Screen Area: 3 m² / 32 sq ft



SPD-250 | Screen Area: 2.78 m² / 30 sq ft



SPD-350 | Screen Area: 5.57 m² / 60 sq ft



SPD-450 | Screen Area: 8.4 m² / 90 sq ft

CONTACT INFORMATION

Europe

Phone +49.0.231.963.3073

pipelinece@wwmach.com

Russia, China and the Middle East

Phone +39.349.198.1281 Italy

Phone +7.495.507.4827 Russia

fsupipeline@wwmach.com

India

Phone +91.11.414.59230

pipelineind@wwmach.com

Africa

Intl. Toll Free 800.9675.3948

pipeline@wwmach.com

North America

Phone +1.281.457.4400

pipelinena@wwmach.com

Latin America

Phone +52.81.8.394.0160

pipelinesa@wwmach.com

Brazil

Phone 800.9675.3948

pipelinebr@wwmach.com

Australia

Phone +61.0.400.144.432

pipelinece@wwmach.com



16031 East Freeway

Houston, TX 77530

Phone 281.457.4400 Fax 281.452.5455

U.S. Toll Free 800.383.2666 Intl. Toll Free 800.9675.3948

pipeline@wwmach.com

www.worldwidemachinery.com