



## **SPD-350** Padding Machine

|                  |                                |
|------------------|--------------------------------|
| Screening area   | 60 sq ft / 5.57 m <sup>2</sup> |
| Operating weight | 83,500 lbs / 37,954 kg         |
| Engine type      | Caterpillar C-9 ACERT          |
| Horsepower       | 257 kW / 350 HP                |



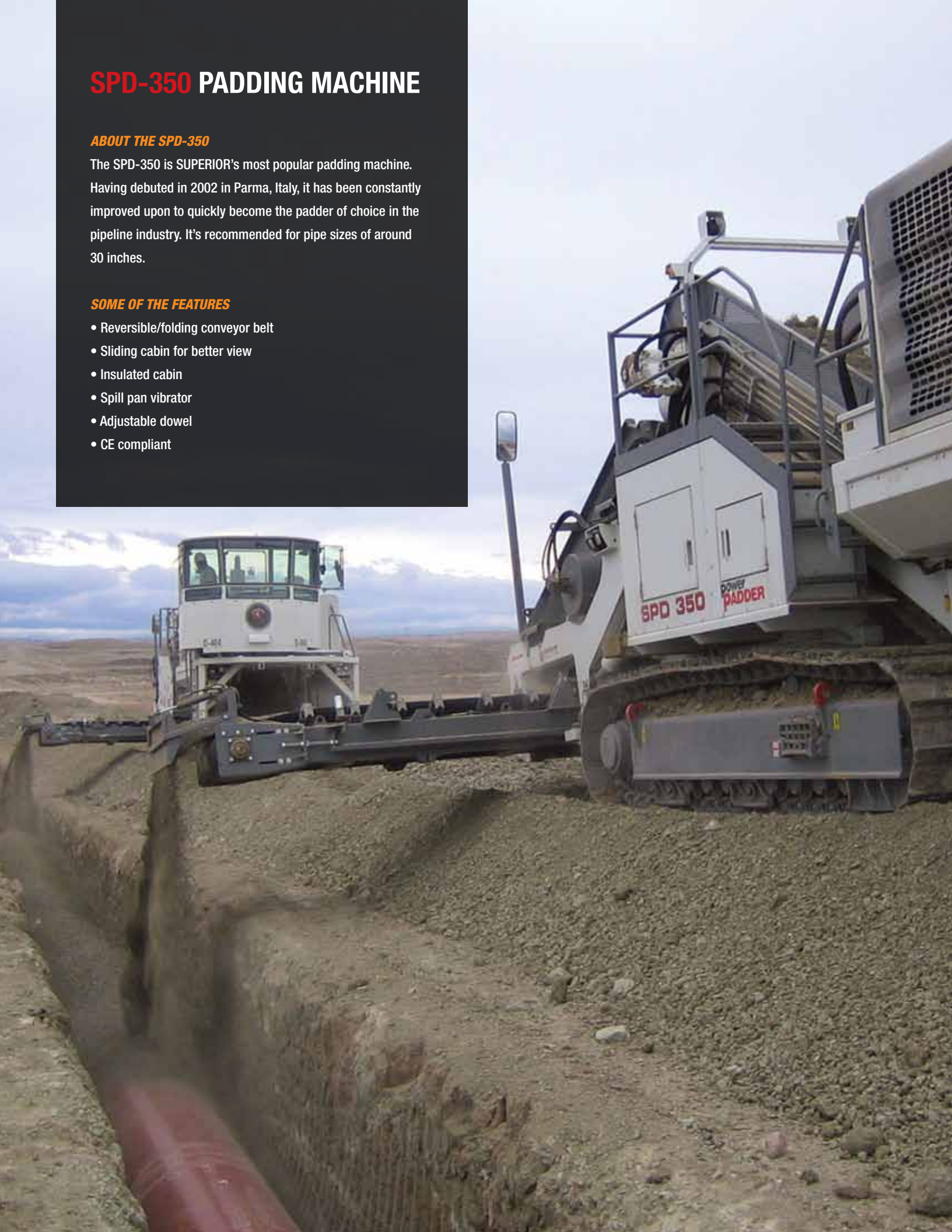
# SPD-350 PADDING MACHINE

## **ABOUT THE SPD-350**

The SPD-350 is SUPERIOR's most popular padding machine. Having debuted in 2002 in Parma, Italy, it has been constantly improved upon to quickly become the padder of choice in the pipeline industry. It's recommended for pipe sizes of around 30 inches.

## **SOME OF THE FEATURES**

- Reversible/folding conveyor belt
- Sliding cabin for better view
- Insulated cabin
- Spill pan vibrator
- Adjustable dowel
- CE compliant



# GENERAL SPECIFICATIONS

## ENGINE

|                               |                  |
|-------------------------------|------------------|
| Type                          | CATERPILLAR      |
| Model                         | C9 ACERT         |
| Net flywheel power (DIN 6270) | 350 HP - 272 kW  |
| Governed speed                | 2,000 g/pm       |
| Displacement<br>in            | 10.3 lt - 629 cu |

## HYDRAULIC SYSTEM

|                            |  |
|----------------------------|--|
| Main pumps:                | Bosch-Rexroth                                      |
|                            | - 2 independent hydrostatic variable pumps travel  |
| Maximum capacity           | 2x189 lt/min - 2x50 U.S. gal/min                   |
| Maximum operating pressure | 420 bar - 6,090 p.s.i.                             |
|                            | - 1 hydrostatic variable pump escalator            |
| Maximum capacity           | 189 lt/min - 50 U.S. gal/min                       |
| Maximum operating pressure | 350 bar - 5,075 p.s.i.                             |
|                            | - 1 hydrostatic variable pump load sensing service |
| Maximum capacity           | 156 lt/min - 41 U.S. gal/min                       |
| Maximum operating pressure | 250 bar - 3,625 p.s.i.                             |

## TRANSMISSION

|               |   |
|---------------|---|
| Type          | Hydrostatic   |
| Motors        | (HYDROMATIC) two motors with axial pistons disappearing into the track frames |
| Brakes        | Integrated negative control   |
| Final drives  | Epicycloidal oil soaked   |
| Maximum speed |   |
| - 1 speed     | 2.5 km/h - 1.6 miles/hr   |
| - 2 speed     | 4.5 km/h - 2.8 miles/hr   |

## CONTROLS

|                     |                      |
|---------------------|----------------------|
| Type                | Pilot operated       |
| Safety              | Emergency shut-off   |
| Safety (Optional)   | Video monitor system |
| Optional<br>control | Full remote          |

## ESCALATOR

|  |  |
|--|--|
| Type   | Hydrostatic, operator controlled, variable speed |
| Vertical adjustment                                | Minus 11 inches to plus 4 ft                     |
| Chain Adjusters                                    | Hydraulic  |
| Reversible double chain escalator with steel shoes |  |
| Shoes width  | 1,400 mm - 55 in                                 |

## FLUID CAPACITIES

|                          |                           |
|--------------------------|---------------------------|
| Fuel tank                | 515 liters - 136 U.S. gal |
| Hydraulic system circuit | 750 liters - 196 U.S. gal |

## FRONT CRACKING WHEEL

|                      |                      |
|----------------------|----------------------|
| Number of wheel      | 2                    |
| Transmission         | Hydraulic            |
| Hydraulic motor      | 1 orbital type       |
| Lifter               | 1 hydraulic cylinder |
| Number of tools      | 6                    |
| Optional<br>crushing | Front roller ice     |

## SCREEN

|                             |                                |
|-----------------------------|--------------------------------|
| Interchangeable screen mesh | 1/2" to 4"                     |
| Width                       | 1,829 mm - 72 in               |
| Length                      | 3,048 mm - 120 in              |
| Area                        | 60 sq ft - 5.57 m <sup>2</sup> |
| Number of decks             | 1                              |
| Maximum capacity            | 110 ton/hr                     |
| Maximum feed size           | 600 mm - 24 in                 |
| Transmission                | Hydraulic                      |
| Hydraulic motor             | 1 gear type                    |

## CONVEYOR BELT

|                                     |                          |
|-------------------------------------|--------------------------|
| Bilateral hydraulic extension slide |                          |
| Type                                | Rubber                   |
| Width                               | 800 mm - 31.5 in         |
| Length                              | 6,000 mm - 236 in        |
| Variable speed                      | 0 - 180 mt/min           |
| Rotation capability                 | Reversible               |
| Transmission                        | Hydraulic variable speed |
| Hydraulic motors                    | 2 orbital type           |

## ELECTRIC SYSTEM

|                                     |        |
|-------------------------------------|--------|
| Operating voltage                   | 24 V   |
| Maintenance free supplied batteries | 2      |
| Capacity (total)                    | 160 Ah |
| Starter capacity                    | 7.5 Kw |
| Alternator                          | 55 A   |

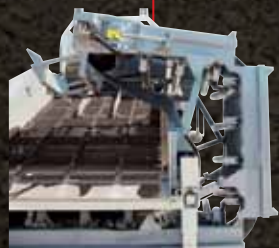
## PRODUCTION

|  |                      |
|--|----------------------|
| Production rate will vary with certain conditions:<br>Soil Condition, Pipe Size, Terrain, R.O.W. |                      |
| Indicative production, 30" pipe, normal soil   | 207 mt/h - 680 ft/hr |

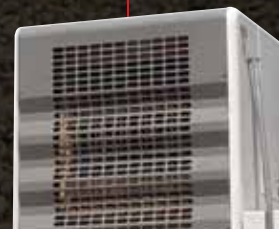
# SPD-350 FEATURES



**SPILL PAN VIBRATOR**  
Prevents material from sticking to pan, especially when soil conditions are wet.



**REVERSIBLE CONVEYOR**  
Conveyor can be used on either side of machine. It also can be folded into 3 parts for easy shipping w/o disassembly.



**INSULATED ENGINE**  
Engine compartment reduces noise to comply with EU noise limit requirements.



**CABIN GLASS PANELING**  
Open glass paneling throughout cabin provides operator with 360° unobstructed view.



**ADJUSTABLE ESCALATOR**  
It can be adjusted hydraulically to compensate for different terrain gradients.



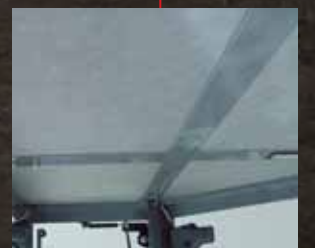
**ADJUSTABLE CONVEYOR DOWEL**  
Controlled hydraulically to adjust angle and distance at which the material is placed back into the ditch.



**OSCILLATING CABIN**  
Hydraulically slides out to either side of the machine to facilitate working on either side of the ditch.



**CONTROL PANEL**  
Controls are duplicated on both sides of the cabin for ease of operation on either side of the ditch.

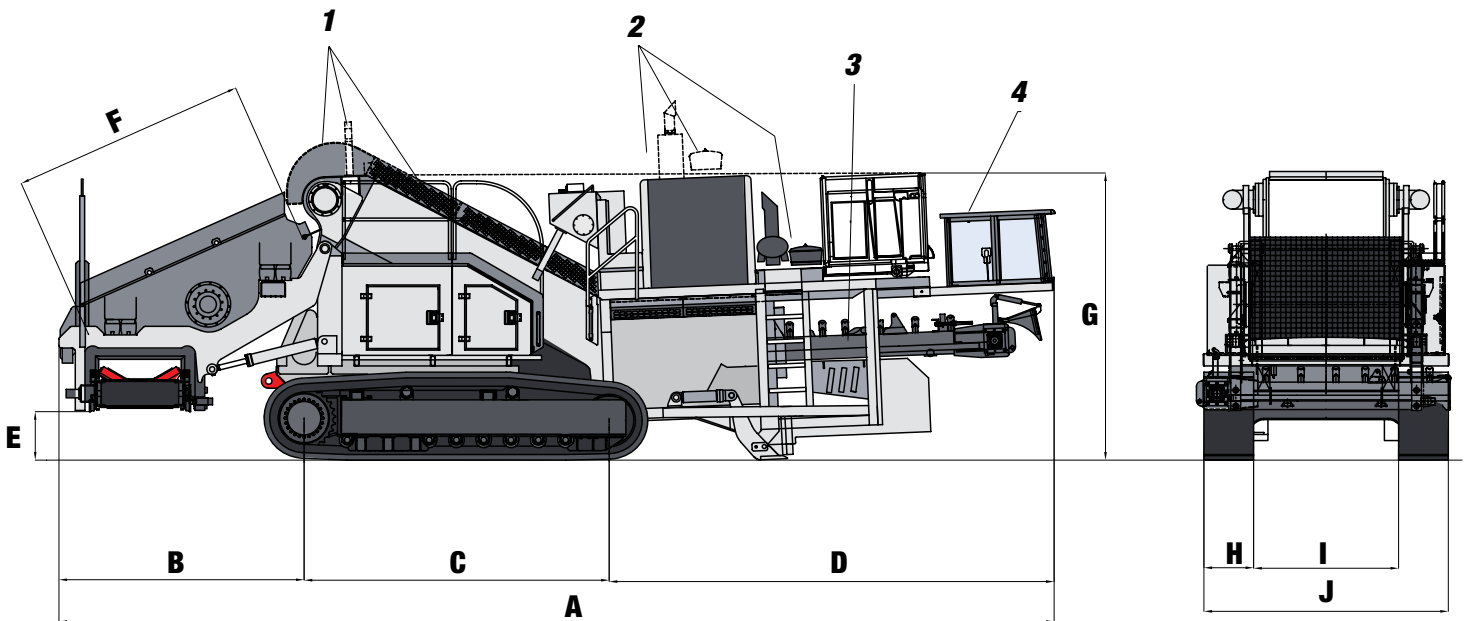


**INSULATED CABIN**  
Insulated cabin with heater and A/C allows for total comfort, even in the harshest environments.



# DIMENSIONS

Operating weight 83,500 lb / 37,954 kg



|   | Feet    | Meters  |
|---|---------|---------|
| <b>A Overall length (with canopy disassembled for shipping)</b>               | 40.1 ft | 12.22 m |
| <b>B Length of screen section</b>   | 9.9 ft  | 3.01 m  |
| <b>C Length of tracks on ground</b>   | 12.3 ft | 3.75 m  |
| <b>D Length of front section</b>  | 17.9 ft | 5.46 m  |
| <b>E Ground clearance to conveyor</b>   | 2 ft    | 60 cm   |
| <b>F Screen length</b>  | 9.4 ft  | 2.88 m  |
| <b>G Height (with canopy, railings and muffler disassembled for shipping)</b> | 11.5 ft | 3.5 m   |
| <b>H Width of tracks</b>  | 2 ft    | 61 cm   |
| <b>I Distance between tracks</b>  | 5.8 ft  | 1.78 m  |
| <b>J Overall width</b>  | 9.8 ft  | 3 m     |

## Shipping disassembly

- 1 Escalator railings are disassembled
- 2 Muffler and air filter are disassembled and placed between engine and cab
- 3 Conveyor belt long section is placed inside the front section
- 4 Cabin is mounted on front supports

## AVAILABLE MODELS



Padding Bucket | Screen Area: 1.53 m<sup>2</sup> / 16.47 sq ft



SPD-150 | Screen Area: 3 m<sup>2</sup> / 32 sq ft



SPD-250 | Screen Area: 2.78 m<sup>2</sup> / 30 sq ft



SPD-350 | Screen Area: 5.57 m<sup>2</sup> / 60 sq ft



SPD-450 | Screen Area: 8.4 m<sup>2</sup> / 90 sq ft

## CONTACT INFORMATION

### Europe

Phone +49.0.231.963.3073

[pipelinece@wwmach.com](mailto:pipelinece@wwmach.com)

### Russia, China and the Middle East

Phone +39.349.198.1281 Italy

Phone +7.495.507.4827 Russia

[fsupipeline@wwmach.com](mailto:fsupipeline@wwmach.com)

### India

Phone +91.11.414.59230

[pipelineind@wwmach.com](mailto:pipelineind@wwmach.com)

### Africa

Intl. Toll Free 800.9675.3948

[pipeline@wwmach.com](mailto:pipeline@wwmach.com)

### North America

Phone +1.281.457.4400

[pipelinena@wwmach.com](mailto:pipelinena@wwmach.com)

### Latin America

Phone +52.81.8.394.0160

[pipelinesa@wwmach.com](mailto:pipelinesa@wwmach.com)

### Brazil

Phone 800.9675.3948

[pipelinebr@wwmach.com](mailto:pipelinebr@wwmach.com)

### Australia

Phone +61.0.400.144.432

[pipelinece@wwmach.com](mailto:pipelinece@wwmach.com)



16031 East Freeway

Houston, TX 77530

Phone 281.457.4400 Fax 281.452.5455

U.S. Toll Free 800.383.2666 Intl. Toll Free 800.9675.3948

[pipeline@wwmach.com](mailto:pipeline@wwmach.com)

[www.worldwidemachinery.com](http://www.worldwidemachinery.com)