



*Shown with optional blade*

## **SP-D6M/N LGP Pipelayer**

Max lift capacity	25,000 kg / 55,115 lb
Operating weight	24,680 kg / 54,409 lb
Net flywheel power	104 kW / 140 HP



## SP-D6M/N LGP PIPELAYER

### ABOUT THE SP-D6M/N LGP

The SP-D6M/N LGP is a fully hydraulic-controlled pipelayer which has been converted from a Caterpillar D6M, D6N or LGP variants. This conversion includes SUPERIOR's CPX hydraulic kit, counterweight assembly, upper and lower hardbar, A-frame, boom and blocks. Both the Hydraulic Kit and Conversion Package are also available for purchase as standalone items for you to install on your own machine.

### CE APPROVAL

These pipelayers will qualify for CE approval with the inclusion of the following features:

- Noise-proof engine enclosure
- Blocks with anti-friction bearings
- Sturdier booms
- Electronic anti-tipping system



# GENERAL SPECIFICATIONS

## HYDRAULIC SYSTEM

Pump	Original installed on Cat D6M/N/LGP
Maximum capacity	217 lt/m - 57 U.S. gal/min
Maximum working pressure	220 bar / 3,190 p.s.i.

## HYDRAULIC WINCHES

Type	Hydraulically controlled drums (reversible). Driven by axial piston hydraulic motor and control valve block in open circuit	
Final drive	Compact hydrostatic drive unit, single stage planetary gear	
Brakes	Integrated multiple-disk brake, spring applied hydraulic release	
	<b>HOOK</b>	<b>BOOM</b>
Drum diameter	324 mm / 12.75 in	324 mm / 12.75 in
Flange diameter	430 mm / 16.9 in	430 mm / 16.9 in
Drum length	280 mm / 11 in	215 mm / 8.5 in
Capacity (16 mm / 5/8 in)	59.6 m / 195.5 ft	45.5 m / 149.5 ft
Wire rope installed	50 m / 164 ft	40 m / 131.2 ft
Rope diameter	16 mm / 5/8 in	16 mm / 5/8 in
Bare drum hook speed	45 m/min - 147 ft/min	48 m/min - 157 ft/min
3 part line hook speed	12 m/min / 39.4 ft / min	-

## BOOM

Type	5.49 m / 18 ft welded box square section
Diameter wire rope	16 mm / 5/8 in
Minimum breaking strength rope	211 kn / 47,398 lb
Part load line	4
Part boom line	3
Optional boom length	6.1 m / 20 ft
Optional folding boom available	

## CONTROLS

Type	Twin pilot operated
Safety	Emergency shut-off

## ADJUSTABLE COUNTERWEIGHTS

(2) removable counterweight packs	1,780 + 1,280 kg / 3,924 + 2,822 lb
Total weight extendable	3,810 kg / 8,399 lb

## CAPACITIES

Fuel tank	311 liters / 82.2 U.S. gallons
Hydraulic tank	29 lt / 7.7 U.S. gal
Cooling system	48 lt / 12.8 U.S. gal
(2) Final drivers track (each)	7 liters / 1.8 U.S. gal
(2) Final drivers winch (each)	0.75 lt / 0.2 U.S. gal

## ELECTRIC SYSTEM

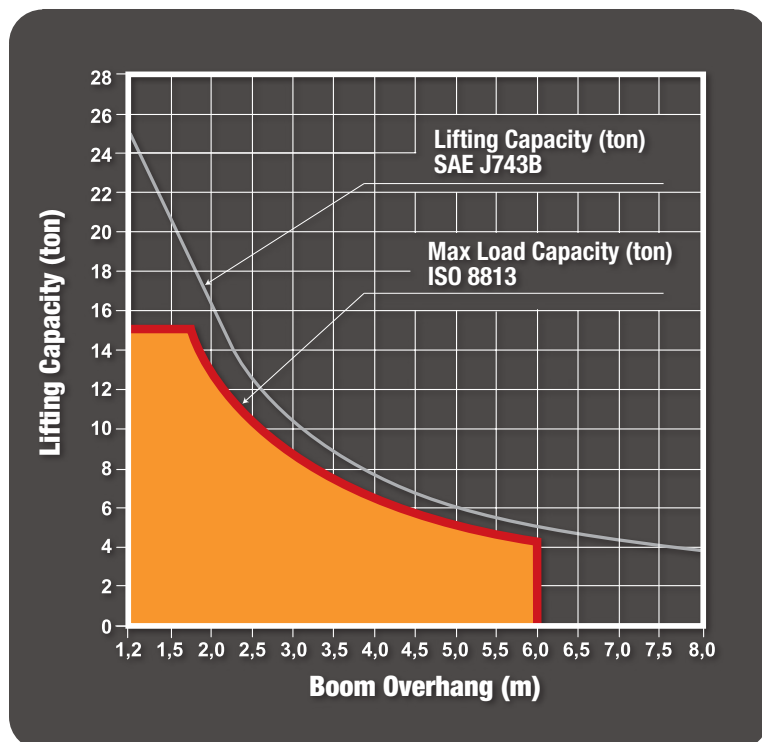
Operating voltage	24V
Maintenance free supplied batteries	2

## WINCH SPECIFICATIONS

## LIFTING CAPACITY

18 ft / 5.49 m boom

Max load capacity 15,200 kg / 33,509



### MAIN PUMP

Type	Bosch-Rexroth axial piston variable displacement pump
------	---

### VALVES

Type	Bosch load-sensing mobile control block proportional directional valves
Max capacity	286 liters/min - 75.5 U.S. gal/min
Working pressure	320 bar - 4,642 p.s.i.

### CONTROL

Type	Pilot units for remote control of winch motors Progressive and sensitive operations
------	--

### SERVICE PUMP

Type	Gear pump
Max capacity	10 liters.min - 2.6 U.S. gal/min
Working pressure	30 bar - 435 p.s.i.

### HYDRAULIC TANK

Type	Pressurized type
Max capacity	100 liters - 26.4 U.S. gal

### FILTER

Type	Donaldson FI0500
Max capacity	500 liters/min - 132 U.S. gal/min



## HYDRAULIC SYSTEM OPTIONS

### ALL HYDRAULIC

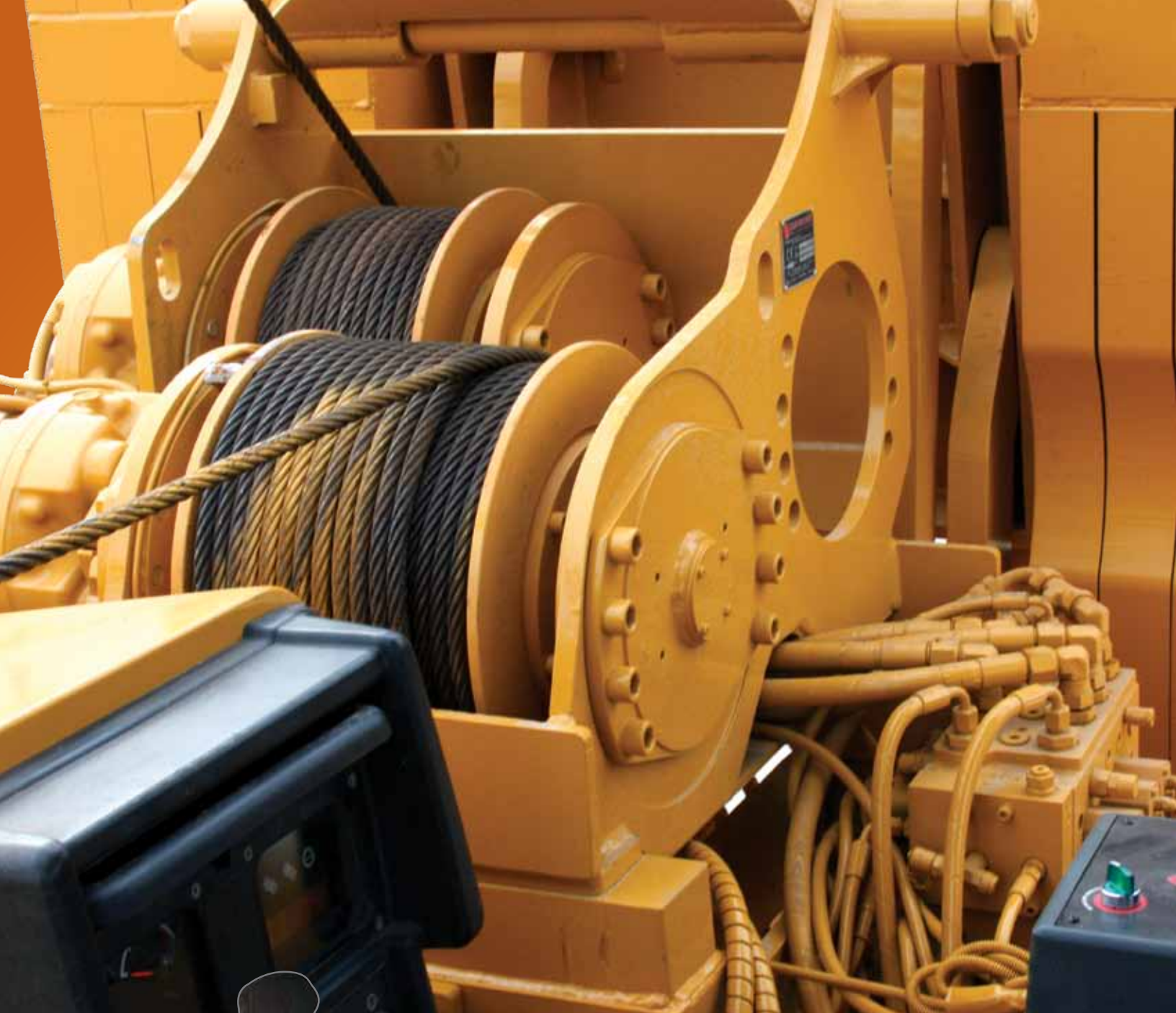
- Freefall System**  
 When the button is engaged, the load free-falls and then immediately stops when the button is released.  
*IMPORTANT: Improper use of this feature may cause damage to the winch. Read all documentation before use.*
- Boom Kick-Out System**  
 This system will ensure you will never bend another boom.
- Anti-Two Block**  
 Sets a minimum distance between the top block and the hook block, preventing collisions between them.

### ELECTRONIC OVER HYDRAULIC

- Freefall system, Boom kick-out system and anti-two block plus:**
- Anti-Tipping System**  
 Prevents tipping by calculating the maximum load that can be lifted.



FEATURE	SUPERIOR	MIDWESTERN®	CATERPILLAR®
Single lever control	✓	✗	✗
Free-fall system	✓	✓	✓
Vertical boom kick-out	✓	✓	✓
Anti-two block	✓	✗	✗
Anti-tipping system	✓	✗	✗
CE compliance	✓	✗	✓

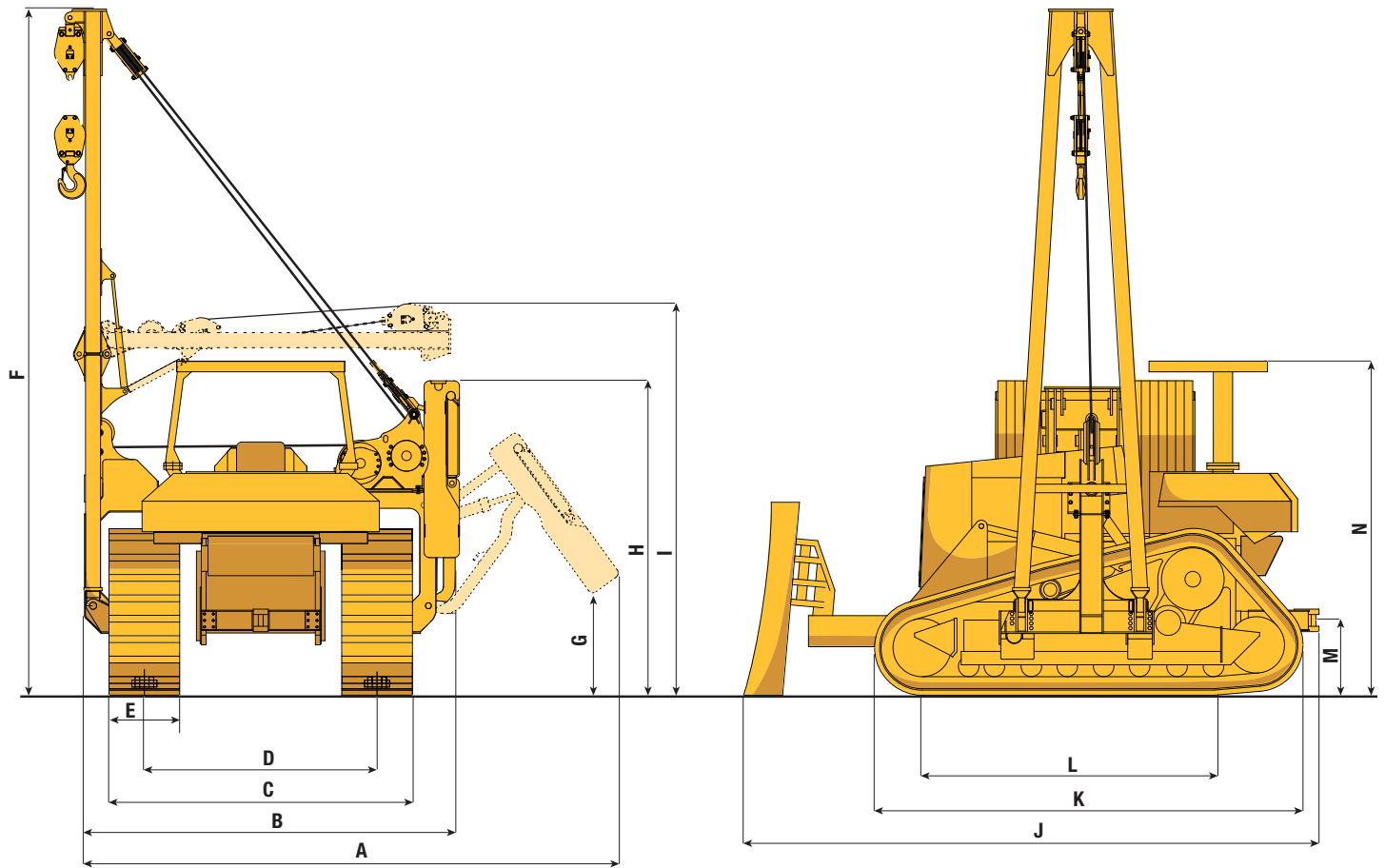


## **SINGLE JOYSTICK CONTROLLER**

SUPERIOR'S single lever control system allows the operator to control the load with one fully-directional joystick for both the boom line and the load line. The operator can activate both winches at the same time by positioning the joystick in different diagonal positions for different desired effects. With light pressure applied, the operator can inch, or with maximum pressure applied and full throttle, can go full bore. No gearing system is necessary, as our package will operate as efficiently as the two gear systems used by our competitors.

# DIMENSIONS

Operating weight 24,680 kg / 54,409 lb



	Feet	Meters
<b>A Overall width (counterweights extended)</b>	16.3 ft	5 m
<b>B Overall width (counterweights retracted)</b>	11.5 ft	3.5 m
<b>C Width of tractor</b>	9.25 ft	2.82 m
<b>D Track gauge</b>	7.1 ft	2.16 m
<b>E Standard shoe width</b>	2.16 ft	66 cm
<b>F Overall height</b>	21 ft	6.4 m
<b>G Ground clearance to bottom of counterweight (extended)</b>	3.2 ft	97.5 cm
<b>H Height to top of counterweight (retracted)</b>	9.6 ft	2.9 m
<b>I Height to folded boom*</b>	12 ft	3.7 m
<b>J Overall length with blade*</b>	17.6 ft	5.4 m
<b>K Overall tractor length</b>	13 ft	3.8 m
<b>L Length of track on the ground</b>	10.2 ft	3.1 m
<b>M Hitch clearance</b>	2.3 ft	69.8 cm
<b>N Height to top of canopy</b>	10.2 ft	3.12 m

\* Folding boom and blade are optional features

## AVAILABLE MODELS



SP-D5M/N LGP



SP-D6M/N LGP



CPX-561



CPX-571



SP/CPX-572



SP/CPX-583



SP/CPX-594

## CONTACT INFORMATION

### Europe

Phone +49.0.231.963.3073

[pipelinece@wwmach.com](mailto:pipelinece@wwmach.com)

### Russia, China and the Middle East

Phone +39.349.198.1281 Italy

Phone +7.495.507.4827 Russia

[fsupipeline@wwmach.com](mailto:fsupipeline@wwmach.com)

### India

Phone +91.11.414.59230

[pipelineind@wwmach.com](mailto:pipelineind@wwmach.com)

### Africa

Intl. Toll Free 800.9675.3948

[pipeline@wwmach.com](mailto:pipeline@wwmach.com)

### North America

Phone +1.281.457.4400

[pipelinea@wwmach.com](mailto:pipelinea@wwmach.com)

### Latin America

Phone +52.81.8.394.0160

[pipelinesa@wwmach.com](mailto:pipelinesa@wwmach.com)

### Brazil

Phone 800.9675.3948

[pipelinebr@wwmach.com](mailto:pipelinebr@wwmach.com)

### Australia

Phone +61.0.400.144.432

[pipelinece@wwmach.com](mailto:pipelinece@wwmach.com)

All information is subject to change without notice.



16031 East Freeway

Houston, TX 77530

Phone 281.457.4400 Fax 281.452.5455

U.S. Toll Free 800.383.2666 Intl. Toll Free 800.9675.3948

[pipeline@wwmach.com](mailto:pipeline@wwmach.com)

[www.worldwidemachinery.com](http://www.worldwidemachinery.com)