



SUPERIOR Product Line



SUPERIOR Product Line

SUPERIOR Manufacturing fabricates a wide range of pipeline specialty equipment. We have two major production facilities: one in Houston, Texas, and a second one in Parma, Italy.

At the Houston facility, we assemble welder tractors and pipe carriers, and convert conventional tractors and mechanical pipelayers into fully hydraulic pipelayers.

Our Parma, Italy, facility is where we manufacture pipelayers, pipe bending machines, mandrels, line-up clamps, pipe facing machines, bending sets, hydraulic conversion systems, and padding machines. These specialty products are sold and rented to pipeline construction contractors around the world through Worldwide Machinery Pipeline Division.

Contents

6	Pipelayers
10	Hydraulic Conversions
14	Padding Machines
20	Vacuum Lifts
26	Pipe Bending Machines
32	Welder Tractors
38	Pipe Carriers
42	Flat Bed Tractors
48	Pipe Facing Machines
54	Pipeline Accessories
60	Contact Information



Pipelayers

SUPERIOR Manufacturing offers the most comprehensive solutions for the pipelaying market. Our SP/CPX-Series are Cat-based pipelayers and dozers which have been upgraded into fully hydraulic machines. The SP/CPX-Series range in sizes from the 561/D5 to 594. In addition, we also manufacture our proprietary pipelayers: the SPX-Series.

The SPX-Series are fully hydraulic pipelayers built from the ground up. They range in size from 46-ton to 96-ton and feature many technical advantages that place them at the top of the industry in terms of safety, reliability and ease-of-use.

The backbone of our pipelayers is our patented Hydraulic Kit. This allows the operator to control the load with one fully-directional joystick for both the boom line and the load line. The operator can activate both winches at the same time by positioning the joystick in different diagonal positions for different desired effects. With light pressure applied, the operator can inch, or with maximum pressure applied and full throttle, can go full bore. No gearing system is necessary, as our package will operate as efficiently as the two gear systems used by our competitors.

SPX-460

SPX-660

SPX-960

SP-D5M/N LGP

SP-D6M/N LGP

CPX-561

CPX-571

SP/CPX-572

SP/CPX-583

SP/CPX-594

Hydraulic Kit (CPX)

Conversion Package (SP)

Features



Anti-Tipping System
It monitors different lifting operations to avoid dangerous tilting and ensure the stability of the machine.

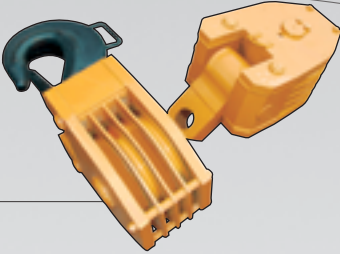
Freefall System
When the button is engaged, the load free-falls and then immediately stops when the button is released.



Boom Kick-Out System
This system will prevent the boom from excess travel, thus ensuring you will never bend another boom.



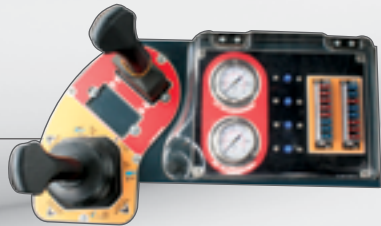
Transmission Pilot Levers
There are 2 extra pilot levers for the transmission, which can assist the operator in making precise maneuvers, such as turning on a steep hill or making pin-point movements to couple the pipes.



Anti-Two Block
Sets a minimum distance between the top block and the hook block, preventing the 2 blocks from touching.



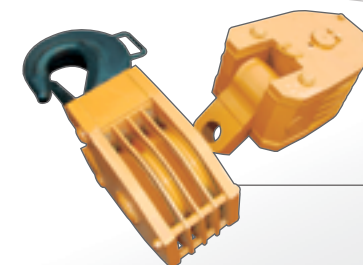
LCD Control Panel
The LCD control panel displays relevant information in a beautiful, easy to read, graphical interface. It can also be adjusted for day or night viewing.



Controls
With only 1 joystick, the operator can operate both winches and increase/decrease the engine's throttle. The machine's travel can be controlled with another joystick.

SPX Series





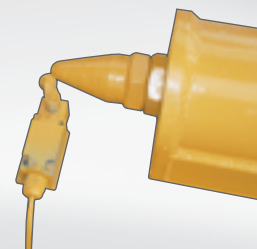
Anti-Two Block

Sets a minimum distance between the top block and the hook block, preventing the 2 blocks from touching.



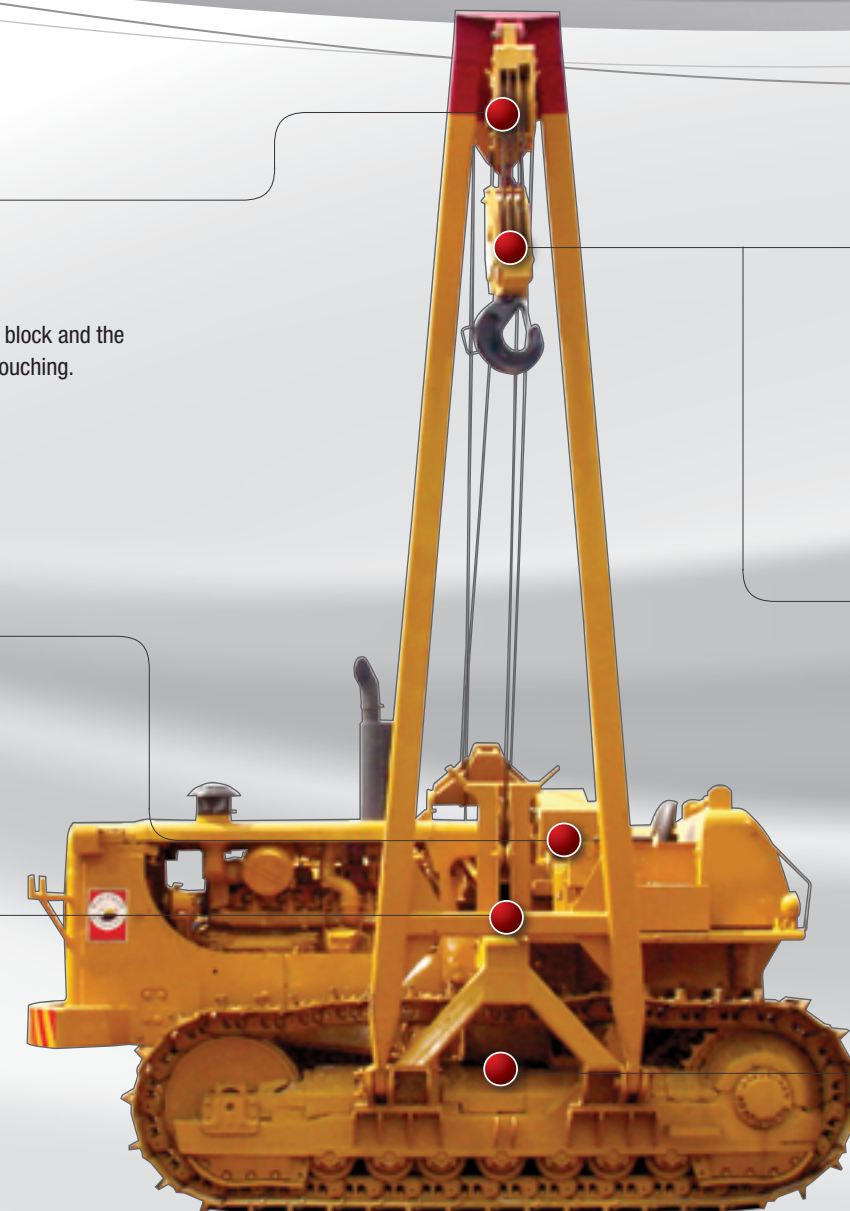
Controls

A single joystick allows the operator to control both the winch and the boom.



Boom Kick-Out System

This system will prevent the boom from excess travel, thus ensuring you will never bend another boom.



Freefall System

When the button is engaged, the load free-falls and then immediately stops when the button is released.



Anti-Tipping System

It monitors different lifting operations to avoid dangerous tilting and ensure the stability of the machine.



Dual Hardbar

Provides maximum support to the pipelayer by converting to a totally rigid frame.



Hydraulic Conversions

Hydraulic Kit (CPX)

For the conversion of mechanical pipelayers to fully hydraulic pipelayers

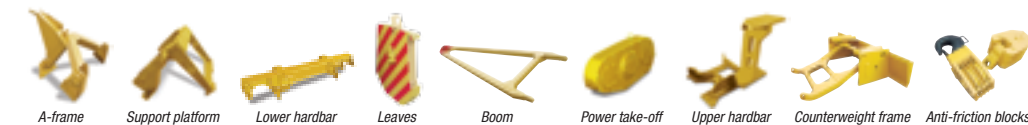
The CPX package is designed to easily convert your 571G/F/E/D, 572G/F/E, 583K/H or 594H/G Caterpillar mechanical sideboom into a fully hydraulic-controlled sideboom. Our unique single lever control reduces the number of controls from 6 to 1, and allows the operator to control both boom and load with just one joystick.

Conversion Package (SP)

For the conversion of Cat dozers to fully hydraulic pipelayers

SUPERIOR fabricates and installs all the components needed to convert your D7H/G, D8K/H and D9H/G Caterpillar tractor or Komatsu D155 tractor to a hydraulic pipelayer. This includes a counterweight rack, leaves, an A-frame, upper and lower hardbar, and a boom. The final process is adding the SUPERIOR hydraulic drawworks system.

Conversion Package (SP) components:



A-frame Support platform Lower hardbar Leaves Boom Power take-off Upper hardbar Counterweight frame Anti-friction blocks



<i>SP-D5M/N LGP*</i>	<i>CPX-561</i>	<i>SP-D6M/N LGP</i>	<i>CPX-571</i>	<i>SP/CPX-572</i>
Operating weight	Operating weight	Operating weight	Operating weight	Operating weight
19,425 kg / 42,824 lbs	14,152 kg / 31,200 lbs	24,680 kg / 54,409 lbs	22,500 kg / 49,500 lbs	28,545 kg / 62,800 lbs
Max lifting capacity	Max lifting capacity	Max lifting capacity	Max lifting capacity	Max lifting capacity
18,200 kg / 40,123 lbs	18,500 kg / 40,785 lbs	25,000 kg / 55,115 lbs	27,000 kg / 60,628 lbs	40,000 kg / 88,183 lbs
Net flywheel power	Net flywheel power	Net flywheel power	Net flywheel power	Net flywheel power
98 kW / 132 HP	78 kW / 105 HP	114 kW / 153 HP	149 kW / 200 HP	149 kW / 200 HP

** Shown with optional combo package. Also available on the SP-D6M/N LGP.*

<i>SP/CPX-583</i>	<i>SP/CPX-594</i>	<i>SPX-460</i>	<i>SPX-660</i>	<i>SPX-960</i>
Operating weight	Operating weight	Operating weight	Operating weight	Operating weight
41,818 kg / 92,000 lbs	55,100 kg / 121,500 lbs	32,000 kg / 70,550 lbs	45,995 kg / 101,400 lbs	61,000 kg / 134,500 lbs
Max lifting capacity	Max lifting capacity	Max lifting capacity	Max lifting capacity	Max lifting capacity
63,000 kg / 138,889 lbs	92,000 kg / 202,822 lbs	45,995 kg / 101,400 lbs	65,300 kg / 143,960 lbs	96,000 kg / 211,200 lbs
Net flywheel power	Net flywheel power	Net flywheel power	Net flywheel power	Net flywheel power
223 kW / 300 HP	305 kW / 410 HP	184 kW / 250 HP	261 kW / 350 HP	324 kW / 440 HP

SP/CPX-Series

SPX-Series



Padding Machines

We are the world's largest manufacturer of padding machines. Our padding machine line features a full range of sizes: the SBP-25 padding bucket, which can be used for finishing jobs, the remote-controlled SPD-150, ideal for small padding operations, the top-loading SPD-160, also remote-controlled, designed for jobs where front loading is difficult, the SPD-250, which has all the features of the 350 but in a smaller frame, the SPD-350, our most popular model and finally, the gargantuan SPD-450 with a screen size of 90 sq. ft. which is 1.5 times that of the SPD-350 and 3 times larger than the SPD-250.

Productivity and ease-of-use were top priorities when each of these models was designed. They have notable features such as oscillating cabins (available only on the 3 largest models), reversible conveyors, spill pan vibrators, adjustable escalators to name just a few. Insulated engine compartments reduce noise levels in order to comply with EU regulations.

SBP-25 Bucket

SPD-150

SPD-160

SPD-250

SPD-350

SPD-450



Adjustable Conveyor Dowel
Controlled hydraulically to adjust angle and distance at which the material is placed back into the ditch.



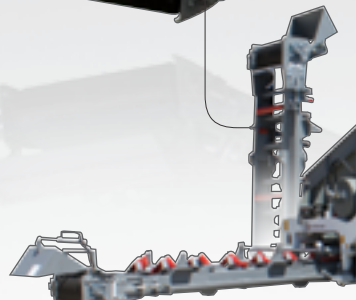
Spill Pan Vibrator
Prevents material from sticking to pan, especially when soil conditions are wet.



Control Panel
The controls are duplicated on both sides of the cabin for ease of operation on either side of the ditch.



Cabin Glass Paneling
Open glass paneling throughout cabin provides operator with 360° unobstructed view.



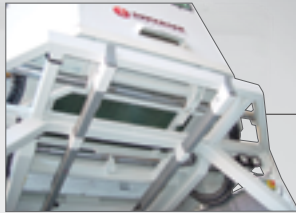
Reversible Conveyor
Conveyor can be used on either side of machine. It also can be folded into 3 parts for easy shipping w/o disassembly.



Insulated Engine
Engine compartment reduces noise to comply with EU noise limit requirements.



Adjustable Front/Rear Sections
The front and rear can be adjusted hydraulically to compensate for different terrain gradients.



Oscillating Cabin
Hydraulically slides out to either side of the machine to facilitate working on either side of the ditch.

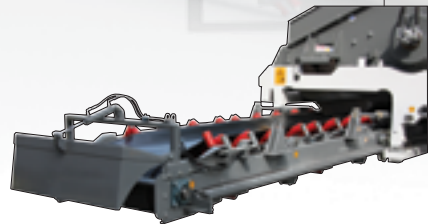




Top-Loading Feeding System
The top-loading system allows to easily feed material into the padder with an excavator. This was designed for very sticky soil conditions or where maneuverability is limited.



Insulated Engine
Engine compartment reduces noise to comply with EU noise limit requirements.



Reversible Conveyor
Conveyor can be used on either side of machine. It also can be folded into 3 parts for easy shipping w/o disassembly.

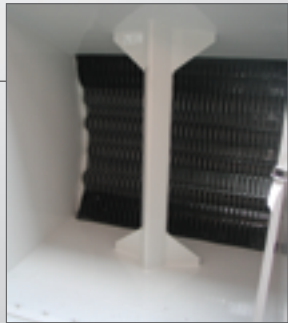
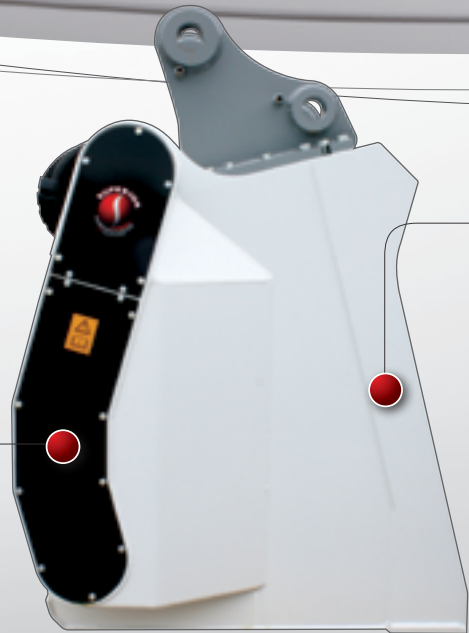
Self-propelled
Unlike similar machines of its kind, the SPD-160 doesn't require towing, as it can travel on its own.



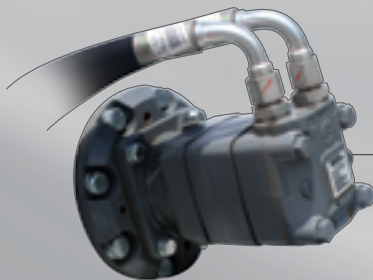
Remote Controller
The machine is operated with an ergonomic remote controller. Each movement is controlled by 10 levers. Tracks levers can maintain their position. The controller features an emergency button and engine RPM regulations.



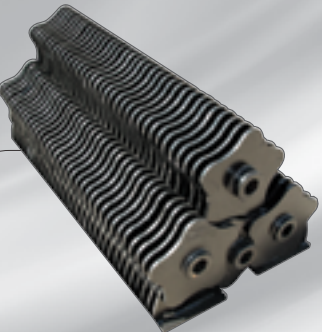
Transmission
The rollers are engaged by mean of 2 double chain transmissions on either side of the bucket.



Frame
The padding bucket is made with a high structural steel frame to withstand harsh conditions.



Motors
The bucket's double chain transmissions are powered by two Sauer Danfoss hydraulic motors on either side, to maximize power output.



Rollers
the 4 screen rollers feature HARDOX steel type. These rollers are available in three sizes: 1 in, 1-1/2 in and 2 in.



Image to come



SBP-15	SBP-25	SPD-150	SPD-160
Operating weight 2,550 kg / 5,622 lbs	Operating weight 3,500 kg / 7,716 lbs	Operating weight 12,000 kg / 26,455 lbs	Operating weight 24,000 kg / 52,911 lbs
Screening volume 1.15 m³ / 1.5 yd³	Screening volume 1.9 m³ / 2.5 yd³	Screening area 3 m² / 32 ft²	Screening area 5.2 m² / 57 ft²
Volume shown at maximum load	Volume shown at maximum load	Net flywheel power 103 kW / 140 HP	Net flywheel power 168 kW / 225 HP

SPD-250	SPD-350	SPD-450*
Operating weight 28,000 kg / 61,729 lbs	Operating weight 37,954 kg / 83,500 lbs	Operating weight 54,000 kg / 119,050 lbs **
Screening area 2.78 m² / 30 ft²	Screening area 5.57 m² / 60 ft²	Screening area 8.4 m² / 90 ft²
Net flywheel power 184 kW / 250 HP	Net flywheel power 257 kW / 350 HP	Net flywheel power 328 kW / 440 HP

* Shown with optional ROPS.
** Weight without ROPS.

Padding Buckets

Remote-Controlled

Full-Sized Padders



Vacuum Lifts

SUPERIOR Vacuum Lifts are designed to make your job site much safer and efficient. This time-saving machine can do in seconds what would normally take several minutes for traditional slinging methods to accomplish. Even better, the vacuum lift allows one operator to do the job of several by eliminating the need for a slinging crew, thus saving you money in redundant labor and making the job site safer. The fully self-contained unit can be hooked up in a matter of seconds and can be controlled by the machine operator by direct-connect cable or by a remote control.

Our vacuum lifts can be used with excavators, cranes and pipelayers and cause no damage to the pipe coating or pipe level. They can also be used for concrete pipes. The suction pads fit a range of pipe sizes, instead of just one, and they are available from 4 to 62 inches. Double-jointed suction pads are also available upon request.

SVIL-90

SVL-130

SVL-220

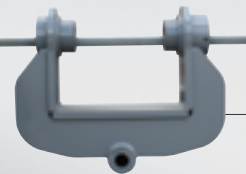
Suction Pads

Features



Remote Control
Serves to control the operation without the use of a connected electric cable. This control will apply and release the vacuum and as added safety it requires the operator to push two buttons at the same time to release the pipe. As an option, it can also control the rotation of the rotator mechanism.

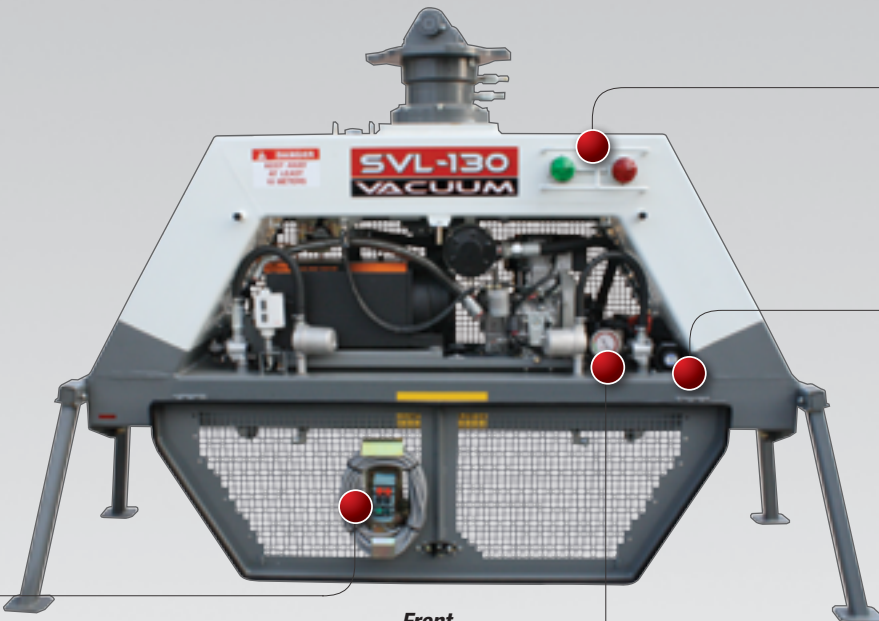
Control Board
This wired controller can be placed inside the cabin and used instead of the remote.



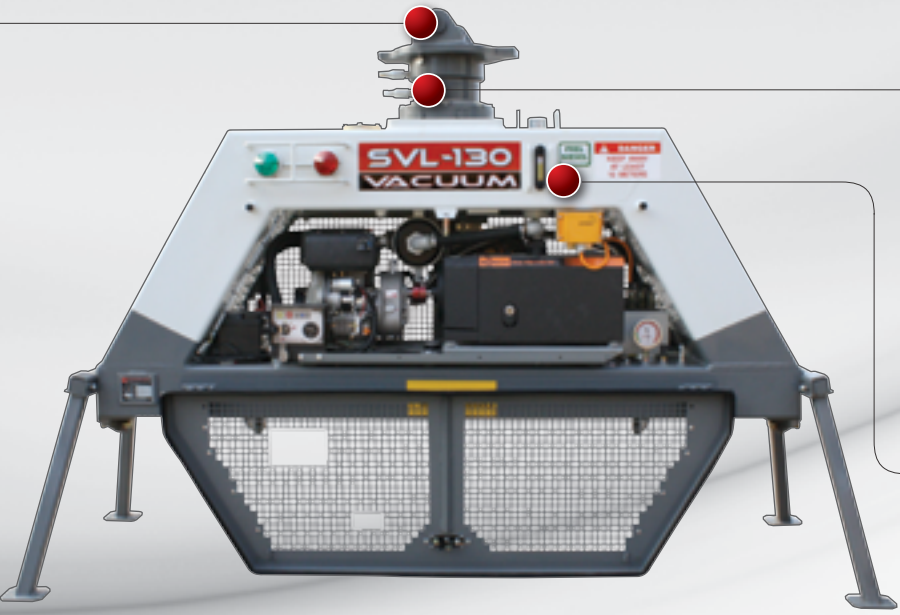
Yoke Attachment
Allows to easily change sizes of excavators by only replacing a bushing.



Rubber Seals (suction pads)
Designed for less time to suction ratios, and are especially effective in extreme cold and hot temperatures.



Front



Back

Flashing Lights
Indicates whether there is an adequate bond between the pipe and the suction pad.



Alarm Sound Indicator
Makes loud alarm sound simultaneously with Red Flashing Alarm Light.



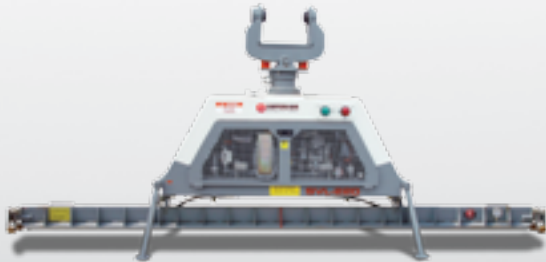
Manometer
The manometer is used for vacuum pressure measurement between pipe and suction pad. There's another manometer located in the suction pad.

Rotating Head
Rotates the body of the vacuum lift for greater control in the placement of the pipe.

Integrated Fuel Tank
It can operate continuously for a full day. Fuel indicator can be easily viewed.

Vacuum Lifts





<i>SVL-90</i>	<i>SVL-130</i>	<i>SVL-220</i>
Operating weight 950 kg / 2,094 lbs	Operating weight 1,500 kg / 3,307 lbs	Operating weight 2,000 kg / 4,409 lbs
Lifting capacity 9 ton	Lifting capacity 13 ton	Lifting capacity 22 ton
Excavator size 20/30 ton	Excavator size 25/35 ton	Excavator size 45/55 ton

<i>Model</i>	<i>Weight</i>	<i>Pipe Range</i>	<i>Capacity</i>
PD 4	75 kg / 165 lbs	4”	1,250 kg / 2,750 lbs
PD 6 – 8	210 kg / 463 lbs	6”-8”	1,600 kg / 3,525 lbs
PD 10 – 14	386 kg / 851 lbs	10”-14”	3,000 kg / 6,615 lbs
PD 16 – 22	435 kg / 959 lbs	16”-22”	4,000 kg / 8,815 lbs
PD 24 – 32	530 kg / 1,169 lbs	24”-32”	6,000 kg / 13,225 lbs
PD 34 – 42	660 kg / 1,455 lbs	34”-42”	7,700 kg / 16,975 lbs
PD 42 – 48	790 kg / 1,742 lbs	42”-48”	11,550 kg / 25,465 lbs
PD 50 – 54	1,210 kg / 2,668 lbs	50”-54”	15,000 kg / 33,070 lbs
PD 56 – 62	1,450 kg / 3,197 lbs	56”-62”	18,000 kg / 39,685 lbs

We also manufacture pads for double jointed 24 m / 80 ft pipe, as well as custom-designed suction pads.



Pipe Bending Machines

The newest version of SUPERIOR's 6 sizes of pipe bending machines is the Millennium Series. These machines are all equipped with LUDV, a unique load-sensing control system that is unprecedented in terms of performance. This proportional system enables the operator to fine tune the combination of bending power and speed, which is a very crucial advantage when bending high-strength pipe.

Thanks to the frame and the load-bearing structures that are sized to withstand the highest pushes, the Millennium Series also bends the most robust pipe such as X-80 and X-100 pipe. Also standard on all machines are 2 extra hydraulic valves to power and control the mandrel along with quick disconnects for the hydraulic lines of the mandrel.

The latest generation of the electronic injection Caterpillar engines supplies more power, thus favoring and further enhancing the potential of the Bosch Rexroth system.

The new operator's platform has been redesigned for fitting the new optional cabin, which offers a completely comfortable environment. The controls have been repositioned in such a way as to give the operator greater visibility.

An extra roller has been added to the front of the larger machines to make it easier to guide the pipe into the machine. All of the guide rollers of the SUPERIOR fleet of bending machines are ball-bearing mounted in order to enable the rollers to rotate smoothly.

The long undercarriage equalizes the pressure exerted by the machine onto the ground, thus keeping the machine stable while bending.

SPB 6-20

SPB 16-30

SPB 22-36

SPB 32-42

SPB 36-48

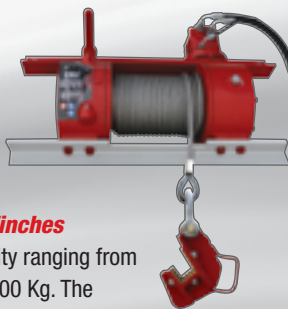
SPB 48-60



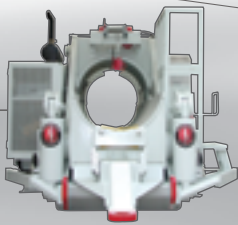
Operator's Platform
By placing the operator's platform and the enclosed engine compartment on opposite sides, the result is maximum operator visibility and a greatly reduced noise level. An optional cabin (below) is available on select models.



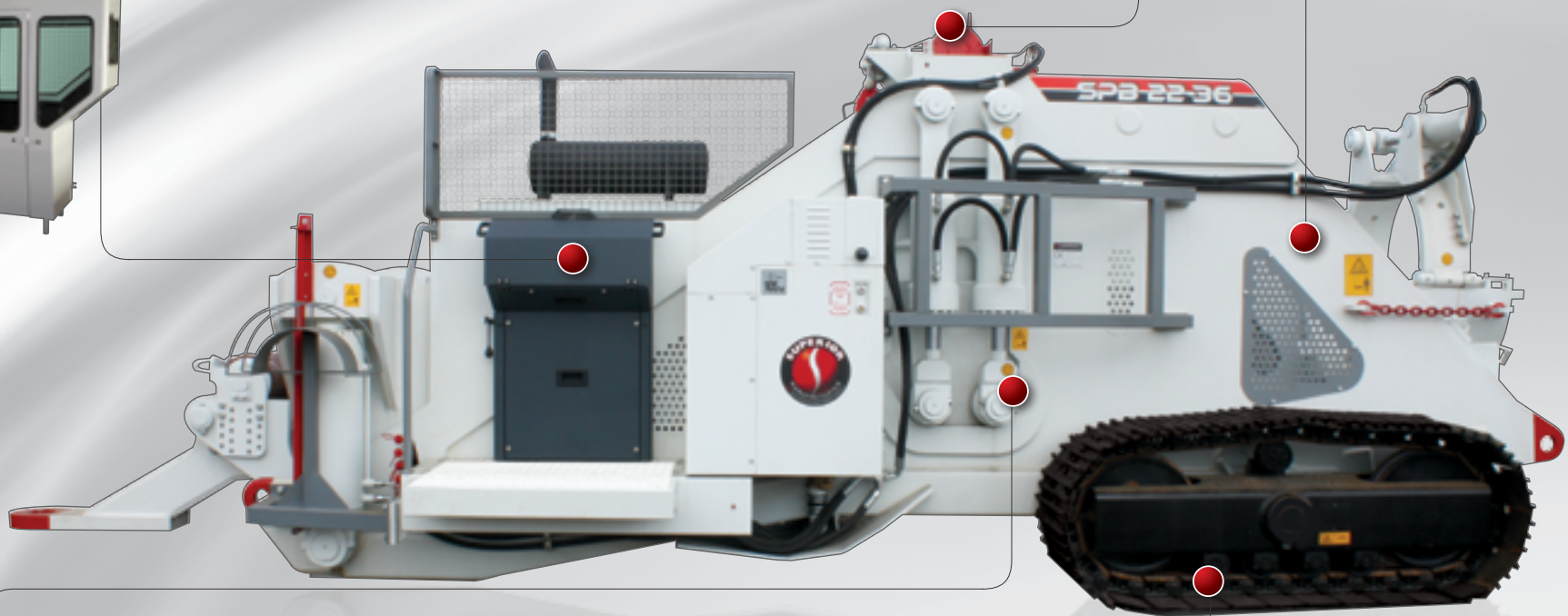
Engine (Opposite side)
A choice of Caterpillar, Perkins, Deutz and Cummins diesel engines, all of which have many reliable and modern features, such as the water pump, integrated filtration system, and self-stretching fan towing seals.



Hydraulic Winches
Pulling capacity ranging from 3,000 to 10,000 Kg. The free drum control is located in the control panel on the operator's platform.



Frame
The main frame is built with high quality steel plate and box-section design, making the machine more resistant to stresses, thus permitting bending of high tensile strength pipes.



Hydraulic System
New hydraulic system with a load-sending variable pump and a five-spool proportional valve, allowing much safer, faster and precise control of movements. The new valve allows the regulation of the pressure and the capacity of each function according to its purpose.

The three largest machines have an automatic power controlling system allowing a quick approach and a progressive slowing down when close to the maximum push. The hydraulic system features high quality, low power consumption components and the cylinders can bear high pressures up to 6,000 PSI.



Tracks
Caterpillar-type crawler under-carriages with triple grouser bars on industrial-grade shoes. A hydraulic cylinder controls the tensioning of the tracks.





SPB 6-20

Operating weight 5,100 kg / 11,244 lbs
Maximum operating pressure 3,480 p.s.i. / 240 bar
Net flywheel power 42 HP (with Cat engine)



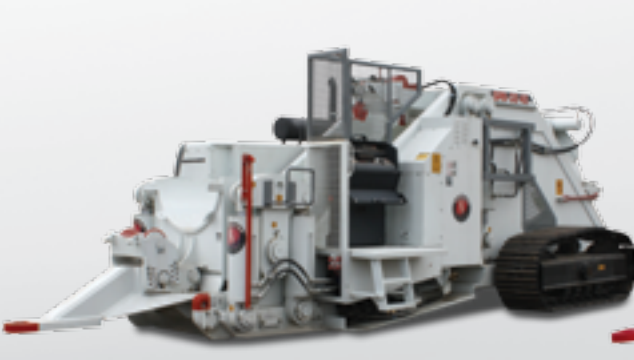
SPB 16-30

Operating weight 18,000 kg / 39,683 lbs
Maximum operating pressure 4,060 p.s.i. / 280 bar
Net flywheel power 99.5 HP (with Cat engine)



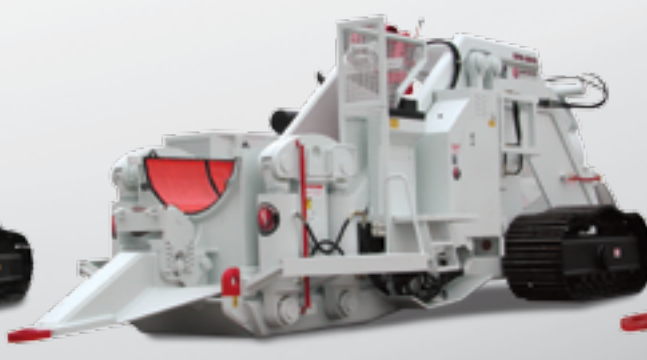
SPB 22-36

Operating weight 27,000 kg / 59,525 lbs
Maximum operating pressure 4,350 p.s.i. / 300 bar
Net flywheel power 99.5 HP (with Cat engine)



SPB 32-42

Operating weight 43,500 kg / 95,900 lbs
Maximum operating pressure 4,640 p.s.i. / 320 bar
Net flywheel power 168 kW / 225 HP



SPB 36-48

Operating weight 68,000 kg / 149,914 lbs
Maximum operating pressure 4,640 p.s.i. / 320 bar
Net flywheel power 168 kW / 225 HP



SPB 48-60

Operating weight 96,000 kg / 211,644 lbs
Maximum operating pressure 4,640 p.s.i. / 320 bar
Net flywheel power 168 kW / 225 HP

Pipe Bending Machines



Welder Tractors

Our pipe welder line is comprised of two basic platforms: a Caterpillar-based welder tractor and a proprietary SUPERIOR Flat Bed-based tractor.

The SPW-D6 series are Cat-based welder tractors available in any D6 model variation and we offer an exceptional level of customization. From the knuckle boom, welding units, bottles, generators, etc., we can tailor-make them based on our customers' specific needs.

The SFT-180W's modular design allows for not only complete customization but also the possibility of re-rofitting it for other specialized purposes, such as induction heating, sand-blasting, pipe carrying, dumping, workshop boxes, etc. This modularity makes this system unparalleled in terms of versatility.

There are two undercarriage options available for the SFT-180W: rubber (SRT), for increased speed and ease of movement and tracked (SFT), for better traction and higher weight loads. As with all Flat Bed tractors, the SFT-180W features a hydrostatic transmission.

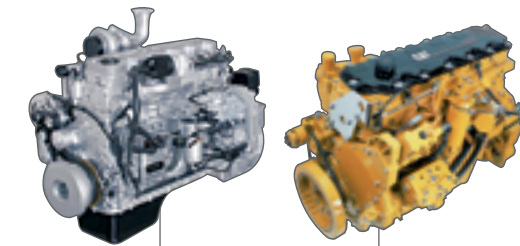
SPW-D6D

SPW-D6E

SPW-D6M

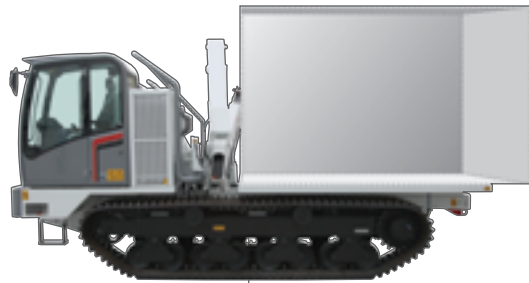
SPW-D6R

SFT-180W



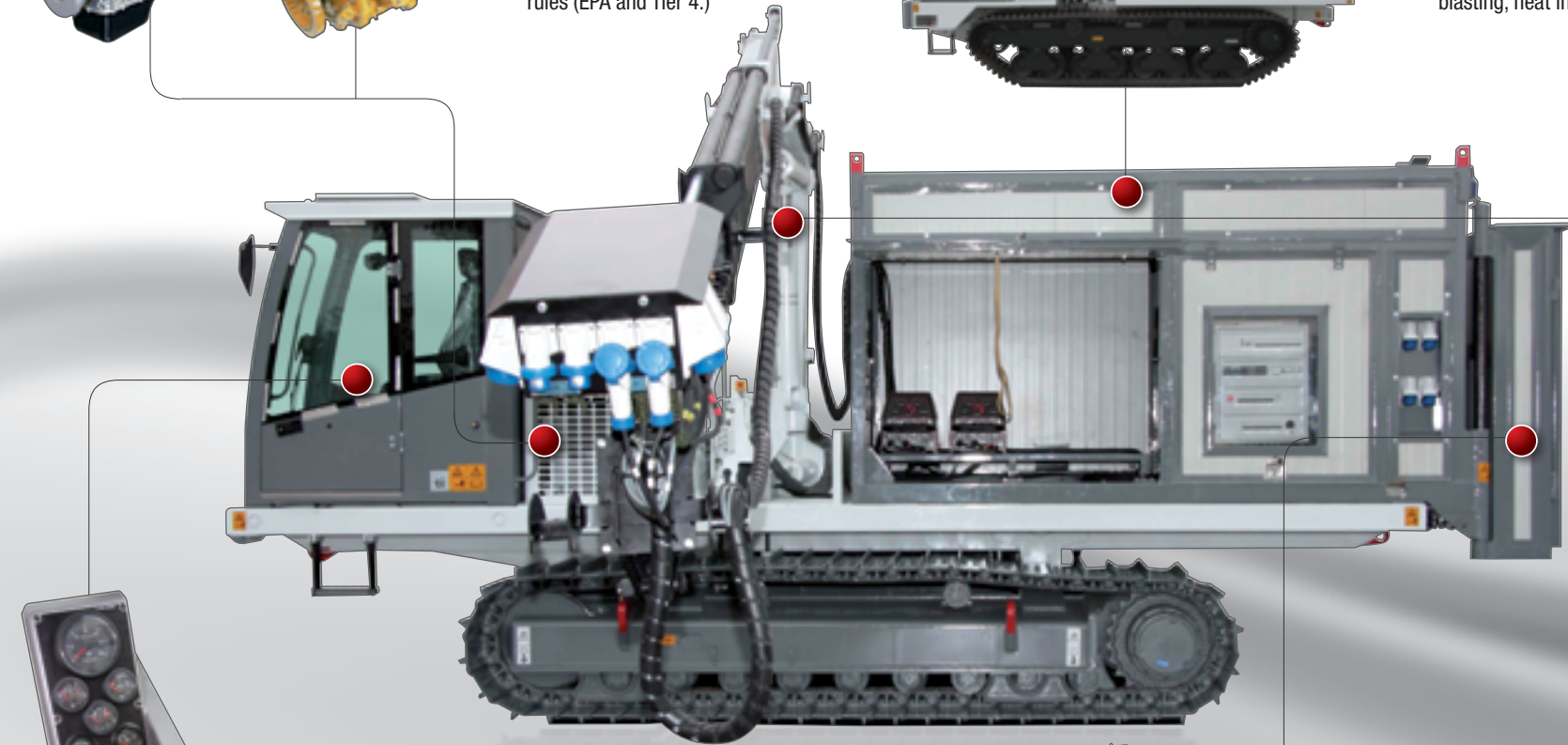
Engines

You have a choice of engine: Caterpillar or Iveco FPT. Both of these comply with environmental rules (EPA and Tier 4.)



Modular Design

The versatility of this design means that you can repurpose your tractor to fulfill other specialized tasks such as sand-blasting, heat induction or dumping.

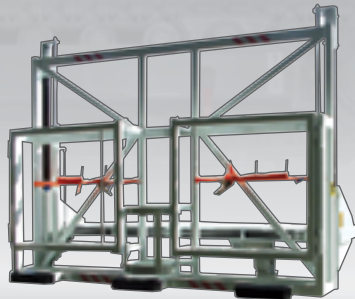


SFT-180W



Joystick Control

The ergonomic joystick controller can be hydraulic or electronic, and provides better control of the machine. The hydrostatic transmission's high reliability is due to its components: Sauer-Danfoss or Bosch-Rexroth.



Bottle Holder (optional)

An optional bottle holder can be fitted to the back of the platform. It is hydraulically operated for greater ease-of-use. A safety switch prevents the machine from moving while engaged.



Packages

The SPW-D6 Series can be outfitted with many different package combinations depending on the customer's needs, including power generators, welding units, gas tanks, electrical outlets, etc.



SPW-D6M



Welding Units

The SPW-D6 series can be outfitted with as many welding units as the customer requires.



Platform

High quality, custom platforms are built to accommodate the specific loadout of each machine.

Hydraulic Boom

We have several brands of hydraulic booms from which to choose: Hiab, Maxilift or Bonfiglioli.



<i>SPW-D6D</i>	<i>SPW-D6E</i>	<i>SPW-D6M</i>	<i>SPW-D6R</i>	<i>SFT-180W</i>
Weight 18,000 kg / 39,600 lbs	Weight 18,000 kg / 39,600 lbs	Weight 15,050 kg / 33,200 lbs	Weight 20,500 kg / 45,000 lbs	Weight 18,500 kg / 40,785 lbs
Boom capacity 5 ton*	Boom capacity 5 ton*	Boom capacity 5 ton*	Boom capacity 5 ton*	Boom capacity 10,000 kg / 22,046 lbs
Net flywheel power 115 kW / 155 HP	Net flywheel power 115 kW / 155 HP	Net flywheel power 104 kW / 140 HP	Net flywheel power 138 KW / 185 HP	Net flywheel power 168 kW / 225 HP

** Higher boom capacities are available upon request.*

Cat-Based

Flat Bed





Pipe Carriers

The SPC-Series are Cat-based pipe carriers fitted with a special kit to transport pipes of various diameters. The hydraulic operated cradle arms require no special hydraulic power source and can be easily removed and re-installed. In addition, this kit can be made to fit your Caterpillar tractor.

The SPC-D60 –based on a Caterpillar D6M XL or D6M LGP tractor– can carry pipe sizes ranging from 6 to 24 inches. The SPC-D70 is based on a D7R tractor and it's ideal for pipe sizes ranging from 24 to 48 inches. The biggest model of the family, the SPC-D80, is suitable for sizes ranging from 40 to 60 inches and it's based on a D8R tractor.

We also offer a pipe carrier based on our Flat Bed tractors. The SFT-250 has a centered cabin for improved stability and offers the same versatility found in other Flat Bed solutions. This means the pipe carrying kit can be easily removed to re-purpose the tractor for other specialized tasks, such as dumping, welding, heat induction, sand-blasting, etc.

SPC-D60

SPC-D70

SPC-D80

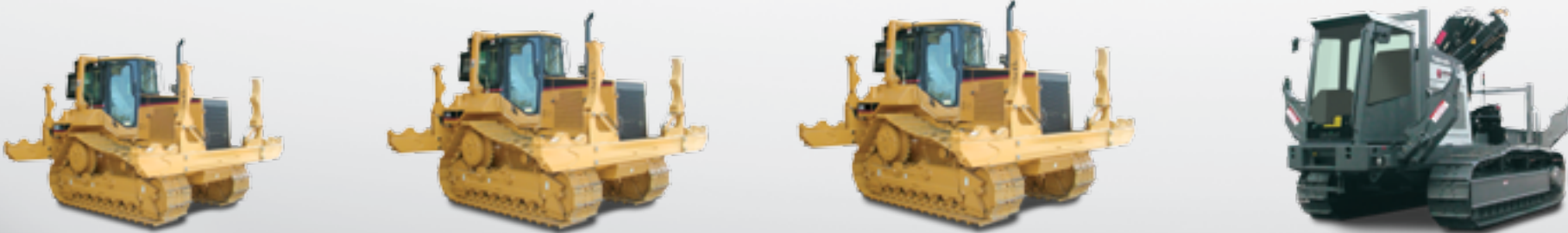
SFT-250



Custom Cradles
The cradles are custom-made to fit any pipe size combination the customer requires. The cradles can be replaced to fit different pipe sizes within the machine's pipe range.

Hydraulic System
The top cradle tilts up hydraulically for loading and unloading, creating a safer work environment. The hydraulic cylinders are controlled from the cabin.

Ease of Transport
The pipe carrying kit can be partially disassembled for transport, then easily assembled back again.



<i>SPC-D60</i>	<i>SPC-D70</i>	<i>SPC-D80</i>	<i>SFT-250</i>
Operating weight 16,000 kg / 35,300 lbs	Operating weight 24,800 kg / 54,560 lbs	Operating weight 34,770 kg / 76,494 lbs	Operating weight 17,000 kg / 37,480 lbs
Pipe sizes 6" to 24"	Pipe sizes 24" to 48"	Pipe sizes 40" to 60"	Pipe sizes up to 48"
Net flywheel power 115 kW / 153 HP	Net flywheel power 171 kW / 230 HP	Net flywheel power 252 kW / 338 HP	Net flywheel power 186 kW / 250 HP

Cat-Based

Flat Bed



Flat Bed Tractors

The Flat Bed tractors are SUPERIOR's premier solution for specialized tasks such as pipe welding, pipe carrying, heat induction, sand-blasting, dumping, portable work shops, or a simple Flat Bed.

There are two basic undercarriage choices: rubber (SRT) and tracked (SFT). Rubber undercarriage offers increased speed and ease of movement and it's ideal for jobsites where a tracked vehicle would not be allowed, such as paved roads. The tracked undercarriage offers better traction and higher weight loads.

There are several models and configurations available, making this one of the most versatile and customizable solutions on the market. The modular design allows the customer to uninstall the loaded kit and re-purpose the tractor with another kit or simply use it as a Flat Bed.

The SRT/SFT series features hydrostatic transmission and a choice of either Iveco or Caterpillar engines, both of which comply with environmental rules (EPA and Tier 4.)

SRT-155WS

SRT-155FB

SRT-155DP

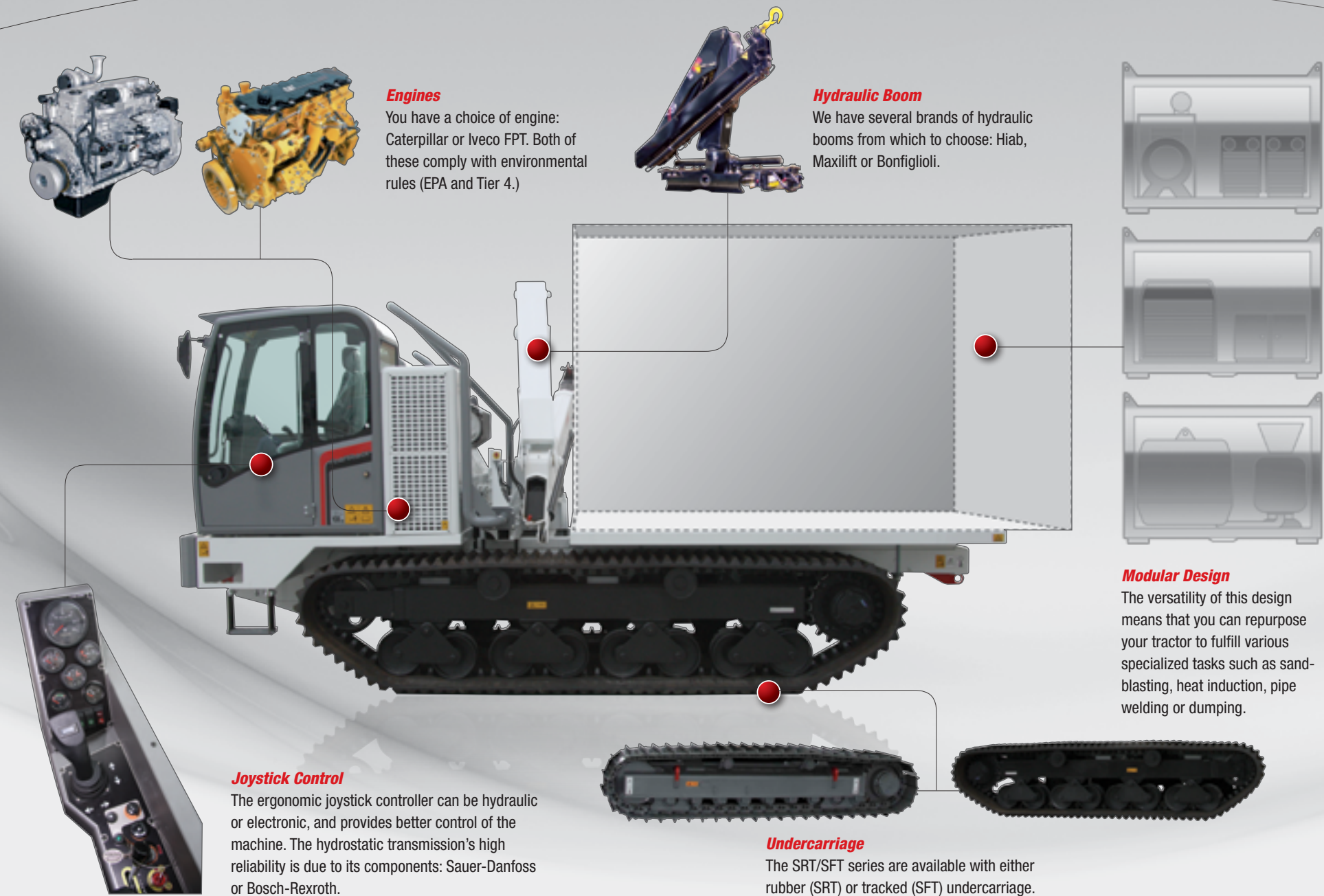
SFT-155

SFT-180

SFT-180W

SFT-225D

SFT-250





<i>SRT-155 WS</i>	<i>SRT-155 FB</i>	<i>SRT-155 DP</i>
Weight 9,700 kg / 21,385 lbs	Weight 11,400 kg / 25,132 lbs	Weight 10,800 kg / 23,809 lbs
Load capacity 6,000 kg / 13,228 lbs	Max. lifting capacity 800 kg / 1,763 lbs	Capacity 2,7 m³ / 95 ft³
Horsepower 129 kW / 175 HP	Horsepower 129 kW / 175 HP	Horsepower 129 kW / 175 HP

Rubber Undercarriage (SRT)



<i>SFT-155</i>	<i>SFT-180</i>	<i>SFT-180W</i>	<i>SFT-225D</i>	<i>SFT-250</i>
Weight 10,500 kg / 23,150 lbs	Weight 13,500 kg / 29,762 lbs	Weight 18,500 kg / 40,785 lbs	Weight 17,000 kg / 37,478 lbs	Weight 17,000 kg / 37,478 lbs
Max. lifting capacity 800 kg / 1,763 lbs	Max. lifting capacity 10,000 kg / 22,046 lbs	Max. lifting capacity 10,000 kg / 22,046 lbs	Capacity 15 m³ / 530 ft³	Max. lifting capacity 13,000 kg / 28,660 lbs
Horsepower 129 kW / 175 HP	Horsepower 153 kW / 205 HP	Horsepower 168 kW / 225 HP	Horsepower 168 kW / 225 HP	Horsepower 153 kW / 205 HP

Tracked Undercarriage (SFT)



Pipe Facing Machines

Our pipe facing machines consists of three basic elements: the base unit, the clamp that fits into it and the generator that powers it up.

The base unit is available in four models ranging in size from 6 through 60 inches. There are two clamps available for each model: a small and a large one. Each one can handle a range of sizes for that particular base unit. The power units can be designed to use diesel or electric power.

The SUPERIOR SFM pipe facing machines are quickly adjustable to any size within the machine's range and can be easily set up to any bevel configuration: stick electrode including modified J bevel, any automatic welding bevel and transition bevels. Brush adapters eliminate both internal and external manual buffing, grinding or sanding.

The hydraulics on the SFM are Bosch Mannesmann and the choices of engine for the power unit are Caterpillar or Deutz.

SFM 6-14

SFM 16-32

SFM 34-48

SFM 48-60

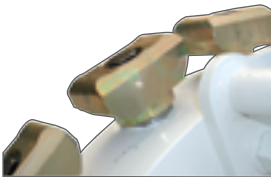


Control Panel (not shown)
A control panel allows the operator to control the machine's main functions.

An emergency button will block all hydraulic operations without affecting the diesel engine of the power unit.



Tooling
The bearing wheel features a number of tool-holding heads. Rotation and forward motion allow these heads to bevel the pipe.



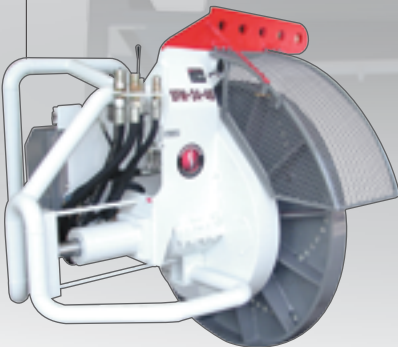
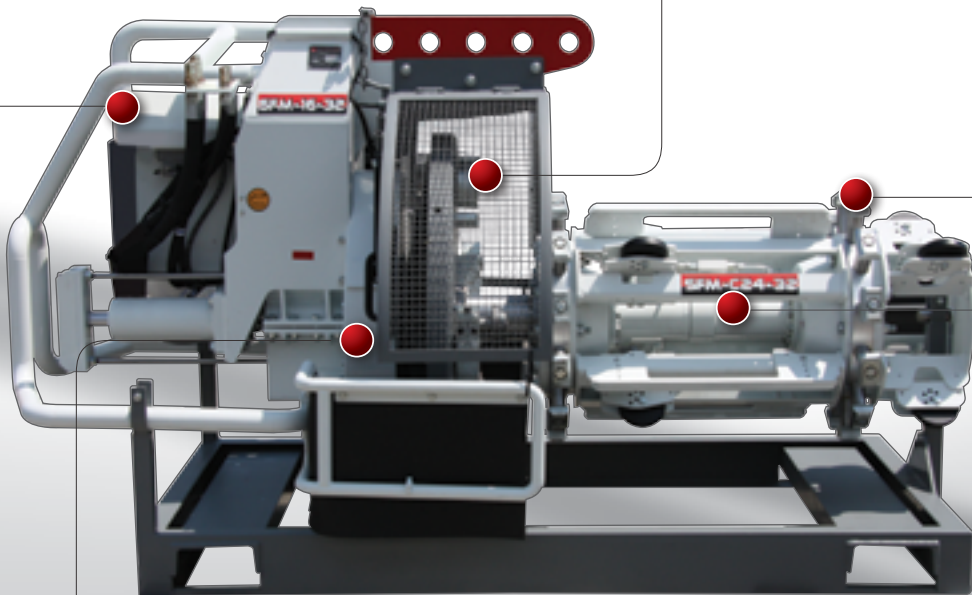
Pistons
Small pistons push into the internal wall of the pipe during clamp opening to allow for the pipe facing machine's alignment.



Power Unit
The power unit is a diesel-powered, independent unit which supplies the necessary hydraulic power to the pipe facing machine.

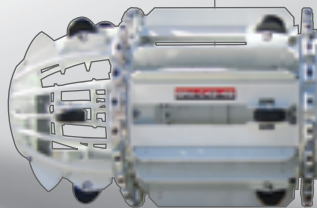


The power unit's easy-to-read control panel controls the power unit. It is separate from the SFM's control panel, which controls the pipe facing machine.



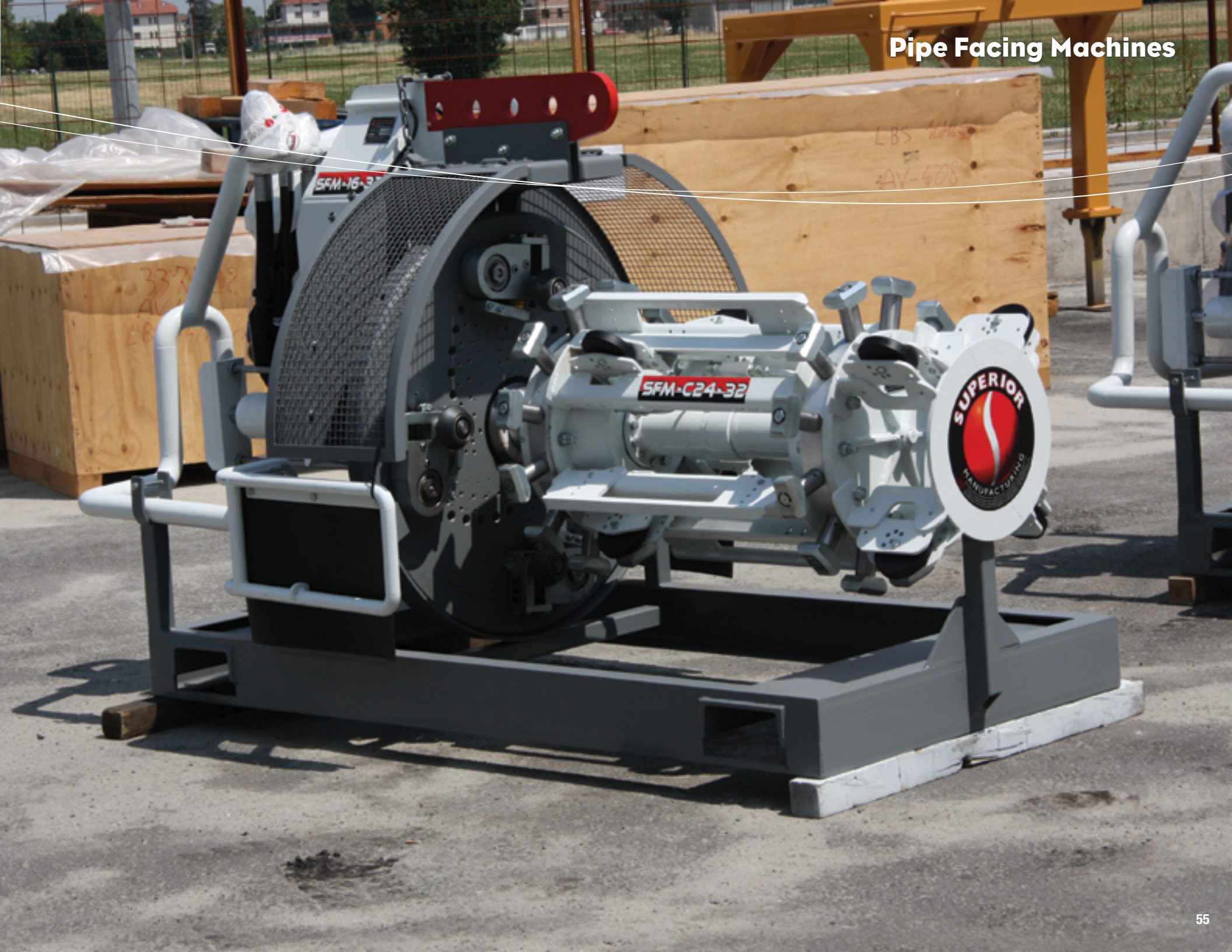
Main Frame
The main frame features a strong metal construction to withstand high pressure. Quick connectors are located at the top of the machine to easily hook it up to the power unit.

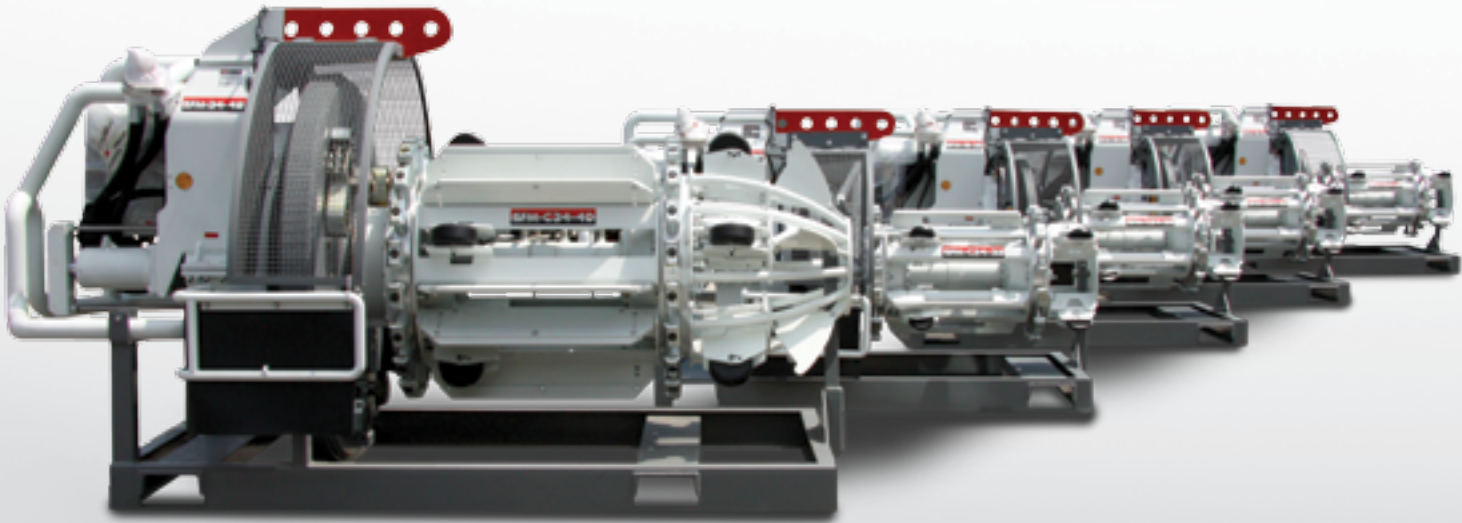
A mesh covering on the bearing wheel serves as a safety feature. The guard frame on the back protects both the control panel and push cylinder.



Clamp Assembly
There are two clamp sizes available for each pipe facing machine model: a large clamp and a small one. Each clamp can handle a wide range of pipe sizes.

The SFM pipe facing machines come with either a large or a small clamp assembly.





<i>SFM 6-14</i>	<i>SFM 16-32</i>	<i>SFM 34-48</i>	<i>SFM 48-60</i>
Pipe range 6-14 in	Pipe range 16-32 in	Pipe range 34-48 in	Pipe range 48-60 in
Weight 454 kg / 1,000 lbs	Weight 1,800 kg / 3,968 lbs	Weight 2,100 kg / 4,630 lbs	Weight 2,515 kg / 5,544 lbs
<i>Small clamp (SMC-C 8-10)</i>	<i>Small clamp (SMC-C 16-22)</i>	<i>Small clamp (SMC-C 34-40)</i>	<i>Small clamp (SMC-C 48-54)</i>
Pipe range 8-10 in	Pipe range 16-22 in	Pipe range 34-40 in	Pipe range 48-54 in
Weight 45 kg / 100 lbs	Weight 600 kg / 1,322 lbs	Weight 990 kg / 2,182 lbs	Weight 2,200 kg / 4,850 lbs
<i>Large clamp (SMC-C 10-14)</i>	<i>Large clamp (SMC-C 24-32)</i>	<i>Large clamp (SMC-C 42-48)</i>	<i>Large clamp (SMC-C 56-60)</i>
Pipe range 10-14 in	Pipe range 24-32 in	Pipe range 42-48 in	Pipe range 56-60 in
Weight 68 kg / 150 lbs	Weight 1,000 kg / 2,205 lbs	Weight 1,610 kg / 3,549 lbs	Weight 2,300 kg / 5,070 lbs



<i>SFM-PU 100</i>	<i>SFM-PU 140</i>	<i>SFM-EPU</i>
Sound-proof engine	Sound-proof engine	Electrical motor three-phase (380 V)
Weight 2,250 kg / 4,960 lbs	Weight 2,750 kg / 6,062 lbs	Weight 1,246 kg / 2,750 lbs
Horsepower 74 kW / 101 HP	Horsepower 104 kW / 142 HP	Horsepower 56 kW / 75 HP



Pipeline Accessories

We also manufacture a comprehensive line of hydraulic wedge mandrels and line-up clamps, ranging in size from 10 to 62 inches. These pipeline accessories are manufactured with high quality steel to be used on thicker wall pipe and support high stresses. Larger sizes can be custom-made upon request.

The Millennium Series has 2 extra hydraulic valves that can power any of the hydraulic mandrels. Motorized travel is standard on the line-up clamps above 20 inches. This feature is also available as an option for clamps smaller than 20 inches.

The bending sets are available both lined and bare, and they are reinforced in high stress areas for maximum strength.

In addition, we offer roli-cradles as part of our pipelaying solutions. The high quality rollers are designed to avoid damaging the pipe.

Mandrels

Line-Up Clamps

Bending Sets

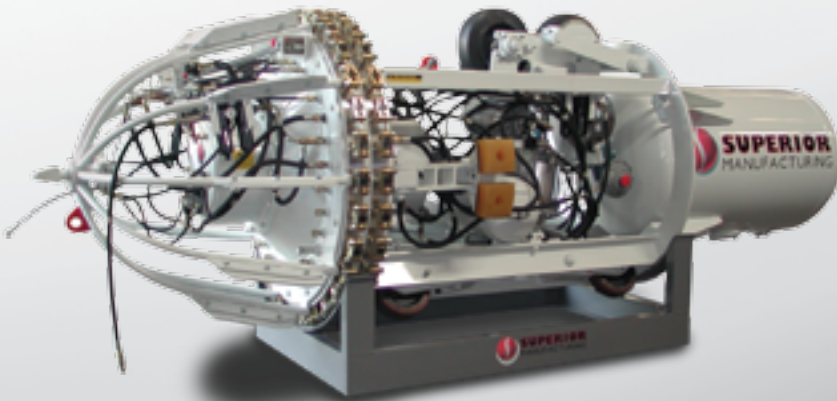
Roli-Cradles



<i>SWH 10</i>	<i>SWH 12-14</i>	<i>SWH 16-18</i>	<i>SWH 20-22</i>	<i>SWH 24-26</i>	<i>SWH 28</i>	<i>SWH 30-32</i>	<i>SWH 34-36</i>
Pipe range 10 in	Pipe range 12-14 in	Pipe range 16-18 in	Pipe range 20-22 in	Pipe range 24-26 in	Pipe range 28 in	Pipe range 30-32 in	Pipe range 34-36 in
<i>W:</i> 170 kg / 374 lbs	<i>W:</i> 200 kg / 440 lbs	<i>W:</i> 420 kg / 924 lbs	<i>W:</i> 660 kg / 1,452 lbs	<i>W:</i> 800 kg / 1,760 lbs	<i>W:</i> 1,320 kg / 2,904 lbs	<i>W:</i> 1,725 kg / 3,795 lbs	<i>W:</i> 1,785 kg / 3,927 lbs

<i>SWH 36-38</i>	<i>SWH 40-42</i>	<i>SWH 42-44</i>	<i>SWH 46-48</i>	<i>SWH 48-50</i>	<i>SWH 52-54</i>	<i>SWH 56-58</i>	<i>SWH 60-62</i>
Pipe range 36-38 in	Pipe range 40-42 in	Pipe range 42-44 in	Pipe range 46-48 in	Pipe range 48-50 in	Pipe range 52-54 in	Pipe range 56-58 in	Pipe range 60-62 in
<i>W:</i> 2,450 kg / 5,390 lbs	<i>W:</i> 2,510 kg / 5,522 lbs	<i>W:</i> 3,638 kg / 8,020 lbs	<i>W:</i> 4,320 kg / 9,504 lbs	<i>W:</i> 5,003 kg / 11,030 lbs	<i>W:</i> 5,430 kg / 11,946 lbs	<i>W:</i> 5,960 kg / 13,112 lbs	<i>W:</i> 6,200 kg / 13,640 lbs

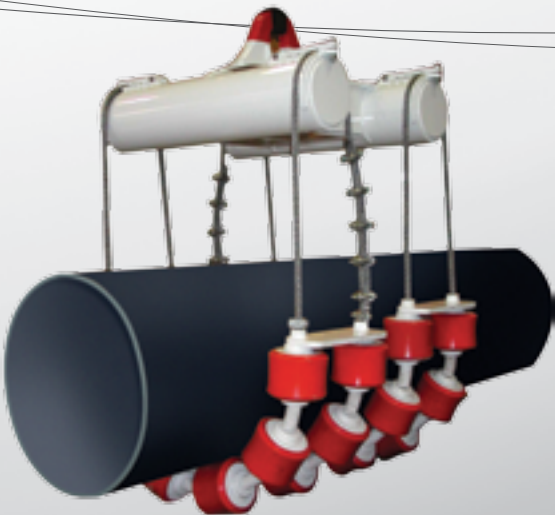
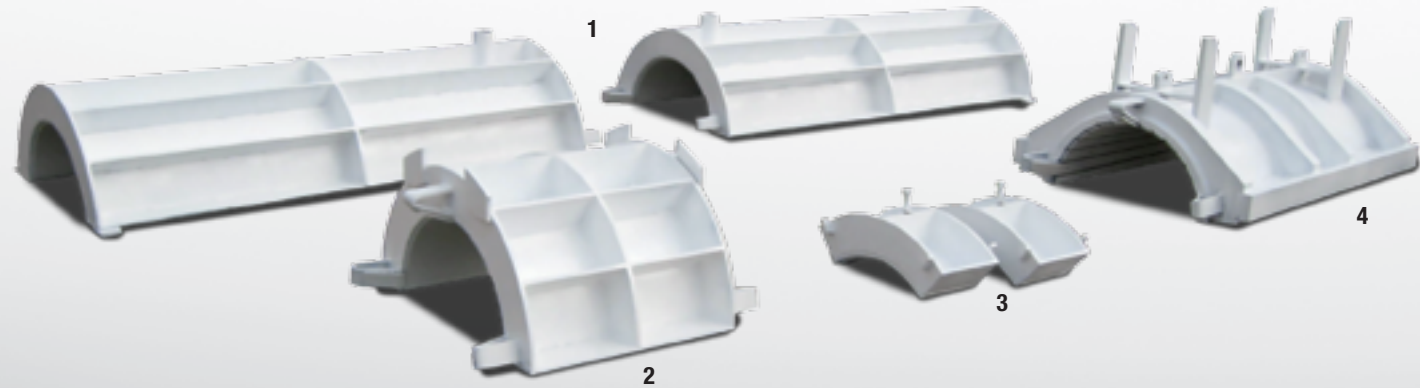
Hydraulic Wedge Mandrels



<i>SLC 8</i>	<i>SLC 10</i>	<i>SLC 12-14</i>	<i>SLC 16-18</i>	<i>SLC 20-22</i>	<i>SLC 24-26</i>	<i>SLC 28</i>
Pipe range 8 in	Pipe range 10 in	Pipe range 12-14 in	Pipe range 16-18 in	Pipe range 20-22 in	Pipe range 24-26 in	Pipe range 28 in
<i>W:</i> 115 kg / 253 lbs	<i>W:</i> 130 kg / 286 lbs	<i>W:</i> 145 kg / 319 lbs	<i>W:</i> 190 kg / 418 lbs	<i>W:</i> 315 kg / 693 lbs	<i>W:</i> 600 kg / 1,322 lbs	<i>W:</i> 600 kg / 1,322 lbs

<i>SLC 30-32</i>	<i>SLC 34-36</i>	<i>SLC 40-42</i>	<i>SLC 46-48</i>	<i>SLC 50-52</i>	<i>SLC 54-56</i>	<i>SLC 56-60</i>
Pipe range 30-32 in	Pipe range 34-36 in	Pipe range 40-42 in	Pipe range 46-48 in	Pipe range 50-52 in	Pipe range 54-56 in	Pipe range 56-60 in
<i>W:</i> 1,100 kg / 2,420 lbs	<i>W:</i> 1,200 kg / 2,640 lbs	<i>W:</i> 1,400 kg / 3,080 lbs	<i>W:</i> 2,200 kg / 4,850 lbs	<i>W:</i> 2,350 kg / 5,180 lbs	<i>W:</i> 2,550 kg / 5,610 lbs	<i>W:</i> 2,700 kg / 5,952 lbs

Line-Up Clamps



For SPB 6-20	For SPB 16-30	For SPB 22-36	For SPB 32-42	For SPB 36-48	For SPB 48-60
LBS 6/20	LBS 16/30	LBS 22/36	LBS 32/42	LBS 36/48	LBS 48/60
LBS 8/20	LBS 18/30	LBS 24/36	LBS 34/42	LBS 38/48	LBS 50/60
LBS 10/20	LBS 20/30	LBS 26/36	LBS 36/42	LBS 40/48	LBS 52/60
LBS 12/20	LBS 22/30	LBS 28/36	LBS 38/42	LBS 42/48	LBS 54/60
LBS 14/20	LBS 24/30	LBS 30/36	LBS 40/46	LBS 44/48	LBS 56/60
LBS 16/20	LBS 26/30	LBS 32/36	LBS 42/46	LBS 46/48	LBS 58/60
LBS 18/20	LBS 28/30	LBS 34/36	LBS 44/46	LBS 48/48	LBS 60/60
LBS 20/20	LBS 30/30	LBS 36/36	LBS 46/46	-	-

The first number indicates the pipe size while the second number indicates the maximum range of the bending machine where it fits. For example: an LBS 16/20 would accommodate a 16" pipe on an SPB 6-20 bender. An LBS 16/30 would also accommodate a 16" pipe but on an SPB 16-30 bender. All models are also available as bare bending sets.

ABOUT BENDING SETS

Each bending set will fit one pipe size only and it includes: a stiff back liner (1); a bending die (2); two pin-up clamp liners (3); and a pin-up liner (4).

Bending sets are available bare or with linings to accommodate special conditions and non-standard pipe or coating. Standard bending sets will accommodate pipe manufactured to API-5L.

The largest pipe size in a given pipe bending machine range requires a bending die only.

SRC 6-12	SRC 12-26	SRC 24-38	SRC 36-50	SRC 48-62
Size 6-12 in	Size 12-26 in	Size 24-38 in	Size 36-50 in	Size 48-62 in
Total no. of rollers 20	Total no. of rollers 24	Total no. of rollers 28	Total no. of rollers 32	Total no. of rollers 36
Max load 8,000 kg / 16,923 lbs *	Max load 13,000 kg / 28,662 lbs *	Max load 35,000 kg / 56,500 lbs *	Max load 45,000 kg / 69,389 lbs *	Max load 55,000 kg / 105,380 lbs *
Weight 515 kg / 1,135 lbs	Weight 680 kg / 1,500 lbs	Weight 2,250 kg / 4,960 lbs	Weight 2,914 kg / 6,425 lbs	Weight 3,284 kg / 7,240 lbs

* The capacities given in the table above are calculated with a safety factor of 5:1

Offices

North America
Phone +1.281.457.4400
pipelina@wwmach.com

Europe
Phone +49.0.231.963.3073
pipelinee@wwmach.com

India
Phone +91.11.414.59230
pipelineind@wwmach.com

Russia, China and the Middle East
Phone +7.495.507.4827
fsupipeline@wwmach.com

Latin America
Phone +52.81.8.394.0160
pipelinesa@wwmach.com

Brazil
Phone 0021.800.9675.3948
pipelinebr@wwmach.com

Africa
Intl. Toll Free 800.9675.3948
pipeline@wwmach.com

Australia
Phone +61.0.400.144.432
pipelinece@wwmach.com



Disclaimer

The information contained in this brochure is intended to be of a general nature only. The SUPERIOR Manufacturing Company may at any time and from time to time, for technical or other necessary reasons, modify any of the details or specifications of the product described in this brochure. Illustrations do not necessarily show products in standard conditions. The dimensions, weights and capacities shown herein, as well as any conversion data used, are approximate only and are subject to variations within normal manufacturing techniques.

