

# KOBELCO®

## SK350LC ACERA MARK 8

SEE THE EXCAVATOR EXPERT. YOUR KOBELCO DEALER.

Kobelco makes excavators for every job, large and small, offering a full line of zero-tail-swing compact, short-radius and mid-size excavators, as well as Blade Runner™ excavator-dozers and full-size conventional Acera hydraulic excavators. Every Kobelco excavator is supported by a network of experienced dealers and field service representatives committed to the trouble-free performance of your excavators and the maximum productivity of your business. Kobelco's large parts inventory is readily available to keep your equipment running at peak efficiency. Product and dealer support extends even further – to the engineers and experts located at the Kobelco factory in Calhoun, Georgia and the Kobelco support center in Carol Stream, Illinois who stand behind every Kobelco excavator. Your Kobelco dealer also helps to make equipment affordable with low-rate financing options, lease programs and insurance plans tailored to match your needs.



STRICTLY EXCAVATORS – STRICTLY THE BEST.

# KOBELCO®

Kobelco Construction Machinery America LLC  
245 E. North Avenue  
Carol Stream, IL 60188-2021  
866-726-3396 Toll Free  
630-260-4000  
630-260-4304 Fax

[www.kobelcoamerica.com](http://www.kobelcoamerica.com)

Note: Due to our policy of continual product improvement, all design, materials and/or specifications are subject to change without advance notice and without liability therefor. Specifications are applicable to units sold in Canada, the United States, its territories and possessions, and may vary outside these areas.

Safety begins with a thorough understanding of the equipment. Always make sure you and your operators read the Operator's Manual before using the equipment. Pay close attention to all safety and operating decals and never operate machinery without all shields, protective devices and structures in place.



Operating Weight  
79,600 lbs

Horsepower  
264 @ 2,100 rpm

Max Digging Depth  
24'10"

Bucket Capacity  
.875 to 2.75 cu yd

Bucket Breakout Force (ISO)  
54,850 lbs

## ACERA MARK 8

### THE SMOOTHEST WAY TO DIG, LIFT, LOAD AND LEVEL

Kobelco excavators set the example for jobsite productivity and versatility. The new SK350LC Acera hydraulic excavator uses state-of-the-industry technology to deliver superior digging, leveling and lifting performance while providing you with top-notch comfort and reliability.

#### Ergonomically designed cab

- Oversized for operator comfort
- All-direction visibility
- State-of-the-art controls provide easy access to all functions
- Climate-controlled air conditioning/heating system

#### Industry-leading forces

- Industry-leading bucket and arm digging forces in its class
- Complete swing-dumping operations within a 9'7" width
- Superior swing torque allows you to swing heavy loads with ease
- Outstanding drawbar pull for grading and hill climbing

#### Proven power on demand

- Dependable big-bore Hino turbocharged, full-injected engine
- 264 SAE net engine horsepower (197 kW)
- Press the Power Boost switch and you'll get 10% more power for additional digging capability without time limit

**Kobelco has one goal:** to build high-performance excavators that give you a competitive edge. Streamline your operation with a tough, dependable SK350LC Acera excavator. Visit your Kobelco dealer for a demonstration.



Easy, ground-level servicing of filters, batteries and hydraulics reduces maintenance time to boost your productivity.



The SK350LC provides industry-leading bucket and arm digging forces in its class so you can easily handle the most demanding digging conditions.

Spacious dimensions and an unrivaled view make the Kobelco cab a comfortable and productive place to work.



Diagnostic system monitors vital functions and provides you with complete operating information.

Operators work with confidence and ease with a clear view of the jobsite.



The operator seat adjusts seven ways to fit operators of any size.

Switches on the right-hand side include double-flow hydraulics for powering a full range of tools and attachments, mode selection switches, heavy lift and independent travel switches.



## SK350LC

### OUTSTANDING VISIBILITY AND CONTROL

Comfortable operators perform at their very best. The Kobelco SK350LC sets a new standard—complete control and maximum comfort—with auto-acceleration and a 360-degree view that puts you at ease.

#### All-direction visibility

- Large glass panels on all sides
- Operator positioned for maximum visibility

#### Comfortable seating

- 7-position suspension seat adjusts for operators of every shape and size
- Viscous silicon cab mounts minimize vibration and shocks
- Wide entry/exit area and roomy cab design provides exceptional comfort
- Standard AM/FM stereo with dual speakers

#### Control made easy

- Intelligent control system ensures smooth engagements and disengagements
- Auto-acceleration system smoothly increases engine rpms to full speed in proportion to the operator's movement of the control levers, resulting in even, deliberate acceleration for precise operations
- Heavy lift mode for extra lift capacity
- Power boost switch is located on the right-hand control lever
- Independent travel circuit, exclusive to North American Kobelco products, provides dedicated flow for excavator travel

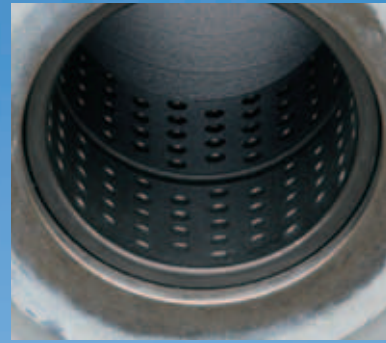
#### Easy-to-read instruments

- Central gauge cluster includes work mode selection switch, fuel and temperature gauges, other gauges and a visible multi-display with large shade screen
- Self-diagnostics allow you to monitor system pressures, engine speed, travel speed and most other operating functions
- Warning screens and audible alarms alert you to any critical function status
- Establish and review service interval reminders, engine oil, hydraulic oil, fuel filter, and hydraulic filter

#### Personal climate control

- High-efficiency air conditioning/heating system
- Program a temperature between 61 and 91 degrees F (18 to 32 C) for optimum comfort any time of year
- Four fan speeds with LCD display





Flanged brass bushings provide long life and extended maintenance intervals.



The Kobelco hydraulic system is sealed and checked from the factory for purity using state-of-the-art "clean room" manufacturing techniques and facilities.



The hydraulic feed to the main pumps is positioned to draw fluid from the side of the hydraulic tank - rather than the tank bottom like many competitors. The hydraulic system utilizes a high capacity, small particle filtration system to provide industry leading maintenance intervals.

## SK350LC

### SMOOTH, FAST POWER

Built at the Kobelco factory in Calhoun, Georgia the SK350LC Acera excavator is reliable, fast and powerful. With industry-leading breakout force and lift capacities and easy state-of-the-art ground level servicing, the SK350LC can streamline your operations. Use the SK350LC to dig trenches, carry and set large pipe and trench boxes, backfill, clear sites and load trucks fast.

#### Reliable power source

- Proven, 264 net horsepower turbocharged electronic fuel-injected Hino engine
- Multiple injector technology for excellent fuel economy
- Meets Tier 3 emissions standards

#### Power mode selection

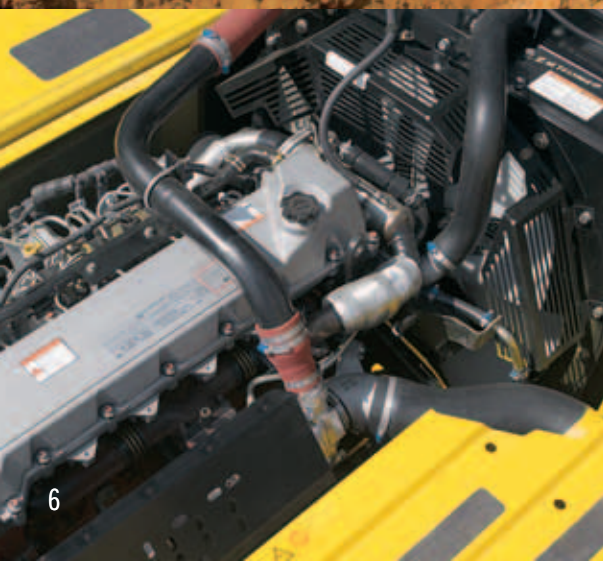
- Provides four modes for work operation:
  - **H Mode** Heavy-duty excavation work, gives priority to the workload at high speed
  - **S Mode** Standard digging and loading work, provides fuel savings
  - **B Mode** Breaker work (1-way flow)
  - **A Mode** Demolition work with crusher (2-way / 2 pump flow)
- Change modes easily using a switch on the readout display

#### Smooth, powerful hydraulic performance

- Power boost switch provides 10% more power on command for increased bucket breakout force, without time limit
- Boom and arm holding valves minimize drift for consistent positioning
- Standard high-flow valve can be switched between one-pump flow to two-pump flow from the cab

#### Designed for auxiliary attachments

- High-capacity hydraulic system allows you to adjust pump flow from the cab
- Standard one or two-way auxiliary valve makes it easy to install piping and controls for auxiliary hydraulics
- Two auxiliary hydraulic modes permit switching between one-way and two-way flow without manually switching a valve (with optional auxiliary hydraulics installed)
- An optional independent flow 'extra' circuit, with dedicated gear pump, provides flow for multi-function attachments that include thumbs or twist buckets



Big-bore, in-line six-cylinder engine produces 736 ft.-lbs (998 N•m) of torque

The Power mode system provides four power modes to match your work operations. The monitor features a large sunshade for easy viewing.

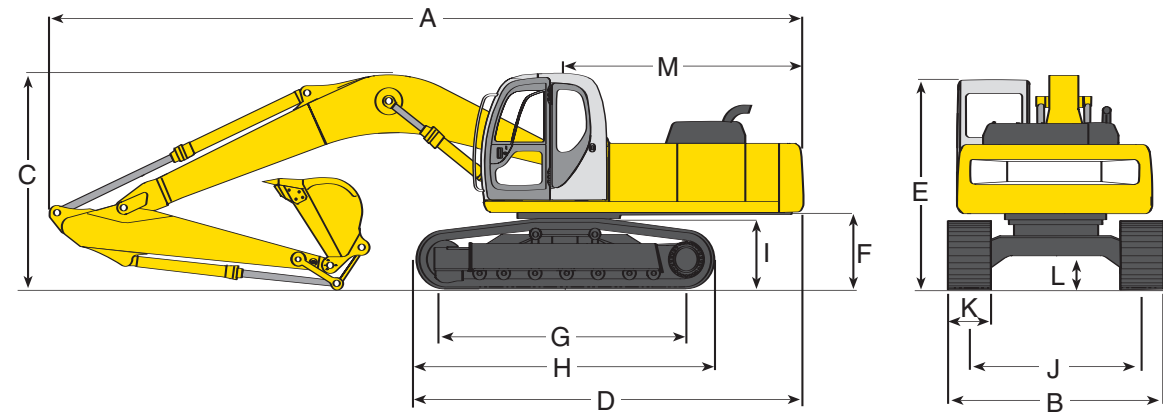


Simplified servicing saves you time and effort. All routine servicing and fluid checks can be performed easily from ground level, with ground level access to batteries, sight gauges, couplers and filters.

Side-by-side radiator, oil cooler and intercooler can be accessed easily for inspection and cleaning. The systems are separate, allowing the radiator to be removed for service without the need to drain the hydraulic system.



# SK350LC DIMENSIONS, WEIGHTS & BUCKET SELECTION CHART



## DIMENSIONS: SK350LC Unit ft-in (m)

ARM LENGTH	10' 10" (3.33)	13' 7" (4.15)
A. Overall length	36' 9" (11.20)	36' 10" (11.23)
B. Overall width (with 800mm shoe)	11' 2" (3.40)	11' 2" (3.40)
C. Overall height (to top of boom)	11' 3" (3.42)	11' 9" (3.59)
D. Basic machine length	19' 8" (5.99)	19' 8" (5.99)
E. Overall height (to top of cab)*	10' 4" (3.16)	10' 4" (3.16)
F. Ground clearance of rear end*	3' 11" (1.20)	3' 11" (1.20)
G. Center distance of tumbler	13' 3" (4.05)	13' 3" (4.05)
H. Overall length of crawler	16' 4" (4.98)	16' 3" (4.97)
I. Crawler height at tumbler center*	3' 5" (1.05)	3' 4" (1.05)
J. Track gauge	8' 6" (2.60)	8' 5" (2.60)
K. Width of crawler shoe	31.5" (800 mm)	31.5" (800 mm)
L. Ground clearance of undercarriage*	19.7" (500 mm)	19.7" (500 mm)
M. Tail swing radius	11' 6" (3.50)	11' 6" (3.50)

\*Excludes height of grouser bar.

## BUCKET SELECTION CHART

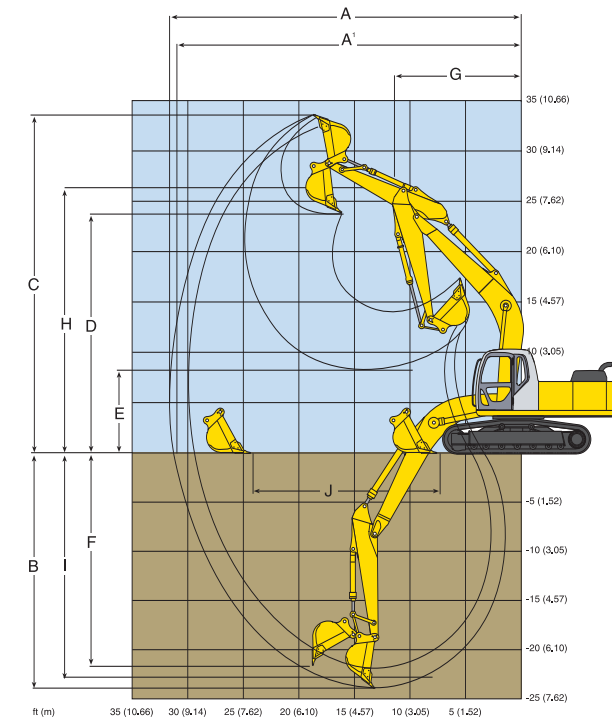
Bucket Duty	Capacity (SAE) Cubic Yard (m³)	Width		Bucket Weight lb (kg)	Arm ft-in (m)	
		Inches (m)	Inches (m)		10'10" (3.3)	13'7" (4.15)
GENERAL	.875 (.669)	24" (.609)		1,925 (873)	H	H
	1.25 (.956)	30" (.762)		2,105 (955)	H	H
	1.50 (1.146)	36" (.914)		2,365 (1,073)	H	M
	1.75 (1.337)	42" (1.066)		2,550 (1,157)	H	L
	2.0 (1.529)	48" (1.219)		2,700 (1,225)	M	X
	2.375 (1.815)	54" (1.371)		3,825 (1,735)	L	X
HEAVY DUTY	.875 (.669)	24" (.609)		2,070 (939)	H	H
	1.25 (.956)	30" (.762)		2,265 (1,027)	H	H
	1.50 (1.146)	36" (.914)		2,545 (1,154)	H	M
	1.75 (1.337)	42" (1.066)		2,740 (1,243)	M	L
	2.0 (1.529)	48" (1.219)		2,905 (1,318)	L	X
	2.375 (1.815)	54" (1.371)		3,040 (1,379)	L	X
SEVERE DUTY	1.00 (.764)	27" (.685)		2,330 (1,057)	H	H
	1.25 (.956)	33" (.762)		2,585 (1,172)	H	H
	1.50 (1.146)	36" (.914)		2,690 (1,220)	H	M
	1.75 (1.337)	42" (1.066)		2,945 (1,336)	M	L
	2.0 (1.529)	48" (1.219)		3,160 (1,433)	L	X

H - Used with material weight up to 3,000 lbs/cu yd (1,780 kg/m³)  
 M - Used with material weight up to 2,500 lbs/cu yd (1,483 kg/m³)  
 L - Used with material weight up to 2,000 lbs/cu yd (1,186 kg/m³)  
 X - Not recommended

## WEIGHTS: SK350LC Bucket weight: 2,360 lbs (1,073 kg)

SHOE WIDTH	in (mm)	35.4 (900)	31.5 (800)
Machine overall width	ft-in (mm)	10' 10" (330)	10' 10" (330)
Ground pressure	psi (kPa)	6.59 (45.4)	7.33 (50.6)
Operating weight	lb (kg)	80,500 (36,500)	79,600 (36,100)
SHOE WIDTH	in (mm)	27.6 (700)	23.6 (600)
Machine overall width	ft-in (mm)	10' 10" (330)	10' 10" (330)
Ground pressure	psi (kPa)	8.31 (57.3)	9.48 (65.4)
Operating weight	lb (kg)	78,660 (35,680)	77,200 (35,000)

# SK350LC SPECIFICATIONS



This chart is a graphic representation of the working ranges for the SK350LC equipped with a 10' 10" (3.3 m) arm.

## PERFORMANCE

Travel speed	3.5/2.1 mph (5.6/3.3 km/h)
Swing speed	10.0 rpm
Gradeability	35 degrees (70%)
Drawbar pulling force	72,400 lbs (322 kN)

## SPECIFICATION SUMMARY

### GENERAL

Operating weight with Bucket	lb (kg)	79,600 (36,100)
Bucket Capacity Range	cu yd (m³)	.875-2.75 (.67-2.10)

### ENGINE

Make and Model	HINO	JO8E-TM
Displacement	cu in (L)	469 (7.684)
Bore and Stroke	in (mm)	4.41"x5.12" (112 x 130)
Horsepower SAE NET	HP/RPM (KW/RPM)	264@2,100 (197@2,100)

### WORKING RANGES

	(Std. Arm)	
Standard Arm	ft-in (m)	10' 10" (3.3)
Bucket Digging Force	lb (kg)	54,850 (24,880)
Arm Crowding Force	lb (kg)	40,690 (18,457)
Ground Level Reach	ft-in (m)	36' 3" (11.06)
Max. Digging Depth	ft-in (m)	24' 10" (7.56)
Max. Dumping Height	ft-in (m)	24' 2" (7.37)
Max. Vertical Wall Digging Depth	ft-in (m)	21' 8" (6.61)

### HYDRAULIC SYSTEM

Hydraulic Pump	No & type	2VP+1FG
Rated Oil Flow	gpm (L/m)	2x77.6 (2x294)
Operating Pressure		
Implement	psi (MPa)	4,970 (34.3)
Travel	psi (MPa)	4,970 (34.3)
Swing	psi (MPa)	4,210 (27.5)
Heavy Lift	psi (MPa)	5,470 (37.8)

## WORKING RANGES Unit ft-in (m)

### ATTACHMENTS

	Standard Arm 10' 10" (3.33)	Optional Arm 13' 7" (4.15)
A. Max digging reach	36' 11" (11.26)	39' 4" (11.97)
A'. Max digging reach at ground level	36' 3" (11.06)	38' 7" (11.79)
B. Max digging depth	24' 10" (7.56)	27' 6" (8.41)
C. Max digging height	34' 9" (10.58)	35' 1" (10.70)
D. Max dumping clearance	24' 2" (7.37)	24' 7" (7.53)
E. Min dumping clearance	8' 7" (2.62)	5' 8" (1.77)
F. Max vertical wall digging depth	21' 8" (6.61)	23' 5" (7.15)
G. Min front swing radius	14' 4" (4.37)	14' 5" (4.43)
H. Height at min swing radius	28' 4" (8.64)	28' 4" (8.65)
I. Digging depth for 8' (2.4m) flat bottom	24' 3" (7.41)	27' 1" (8.27)
J. Horiz digging stroke at ground level	19' 0" (5.79)	23' 7" (7.21)

## DIGGING FORCE Unit lb (kN)

	w/P Boost	w/out P Boost
Bucket digging force, lb (kN) ISO	54,850 (244)	49,910 (222)
Bucket digging force, lb (kN) SAE	49,230 (219)	44,740 (199)
Arm crowding force, lb (kN) ISO	40,690 (181)	37,090 (165)
Arm crowding force, lb (kN) SAE	39,570 (176)	35,970 (160)

## REFILLING CAPACITIES Unit: US gal (liters)

Fuel tank	153 (580)
Hydraulic oil reservoir	74 (280)
Hydraulic system including oil reservoir	93 (353)
Cooling system	8.2 (31)
Engine oil	7.5 (28.5)

### UNDERCARRIAGE

Track Overall Length	ft-in (m)	16' 4" (4.98)
Track Overall Width w/Std. Shoe	ft-in (m)	11' 2" (3.40)
Track Shoe	in (mm)	31.5" (800)
Travel Speed	mph (km/h)	3.5/2.1 (5.6/3.3)
Draw Bar Pull	lb (kg)	72,400 (32,909)
Ground Bearing Pressure	psi (Kpa)	7.33 (51)
Ground Clearance	in (mm)	20" (500)

### SWING

Swing Speed	rpm	10
Tail Swing Radius	ft-in (m)	11' 6" (3.50)
Swing Torque	lb-ft (kN • m)	88,507 (120)

### SHIPPING DIMENSIONS

Height	ft-in (m)	11' 3" (3.42)
Width w/Std. Shoe	ft-in (m)	11' 2" (3.40)
Length	ft-in (m)	36' 9" (11.20)

**ACERA**  
**Mark 8**





## SK350LC Standard and Optional Equipment



**ACERA  
Mark 8**

### STANDARD EQUIPMENT

- AM/FM radio
- Arm: 10' 10" (3.3 m) with vertical ribbed rock guard and tapped blocks for axillary piping
- Audible warning system for high coolant temperature, low engine oil pressure, clogged air filter and oil replacement interval
- Boom: 21' 4" (6.5 m)
- Boom and arm holding (anti-drift) valves
- 1 or 2-way auxiliary valve with flow control.
- Cab is die formed, modular steel, full-vision, sound insulated, with viscous silicon-filled mounts, windshield wiper, heater and defroster, cigarette lighter, ashtray, floor mat, cab light, control lever lock, tinted skylight with damper cylinder
- Climate control air conditioning/heating system
- Display monitor mounted on multi-function console provides status of following: aging of engine oil, fuel and hydraulic filters, system status, engine preheat, low engine oil pressure, engine coolant temperature, air cleaner restriction, battery charging, fuel level, CPU error and tachometer. Beneath monitor are switches for auto-decel, windshield washer and wiper, mode selector and swing flashers
- Double pump flow for bucket in
- Dual element air cleaner
- Electric horn
- Emergency electronic bypass
- Engine shuts down automatically for low oil pressure
- Heavy-duty boom and arm
- Heavy-duty batteries (2 x 12 volt 136 AH)
- Heavy Lift without time limit
- Hydraulic track adjusters
- Independent travel
- Lifetime lubricated track rollers, idlers and sprockets
- Hino engine, model J08E-TM
- Mode selection
  - **H Mode** Heavy-duty excavation work, gives priority to the workload at high speed
  - **S Mode** Standard digging and loading work, provides fuel savings
  - **A Mode** Bi-directional auxiliary for use with shears, augers, etc.
  - **B Mode** 1-way auxiliary for use with hammers, compactors, etc.
- Power Boost without time limit
- Power outlet, 24 volt to 12 volt converter
- Proportional auto-accel system
- Removable cleanout screen for radiator
- Nine (9) track rollers
- 19,357 lb (8780 kg) counter-weight

- Removable travel levers with toe tabs
- Long-life attachment bushings. Flanged bushing assembly at bucket pivot.
- Service diagnostics:
  - Computer system displays over 68 service items
  - Over 60 event fault code memory, accessible from cab
- Starting motor (24 v/5.0 KW) 60 amp alternator
- Straight travel system
- Suspension seat, 7-way
- Swing and travel automatic parking brakes
- Swing flashers recessed into counterweight. Off/on switch located on multi-function console in cab
- Swing priority (trenching system) functions automatically
- Swing shockless valve
- Track shoes: 31.5" (800 mm) semi-triple grouser
- Travel—two speed with automatic shift
- Two lever control for boom, arm, bucket and swing; pilot operated wrist controls and foot pedals
- Warm up function of engine and hydraulic system functions automatically
- Work lights—three front and two rear
- New X-Frame undercarriage

### OPTIONAL EQUIPMENT

- Arm: 13' 7" (4.15 m) with rock guard
- Belly pan guard
- Boom and arm load (lock) valves
- Combined 1 or 2-way auxiliary hydraulic piping (one or two pump) with hand or foot controls
- Control pattern changer (ISO/BHL)
- Front rain visor
- High & wide (heavy-duty) lower
- Hydraulic oil for cold or tropical environments
- Independent flow extra auxiliary circuit
- Large selection of buckets
- Long reach attachment with heavier counterweight
- Mass Excavator attachment
- Single pedal travel
- Track shoe: 27.6" (700 mm) double bar grouser
- Track shoe: 31.5" (800 mm) triple bar grouser
- Vandalism guards

\*Some items available as field install kits only.